

501/601
LE CHAMOIS



**BENCHLANDS
PENTHOUSE
CONDO**

6.5
BEDROOMS

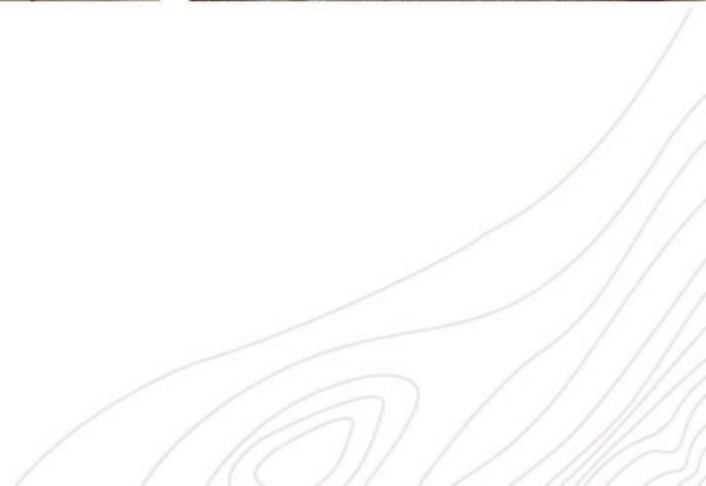
5.5
BATHROOMS

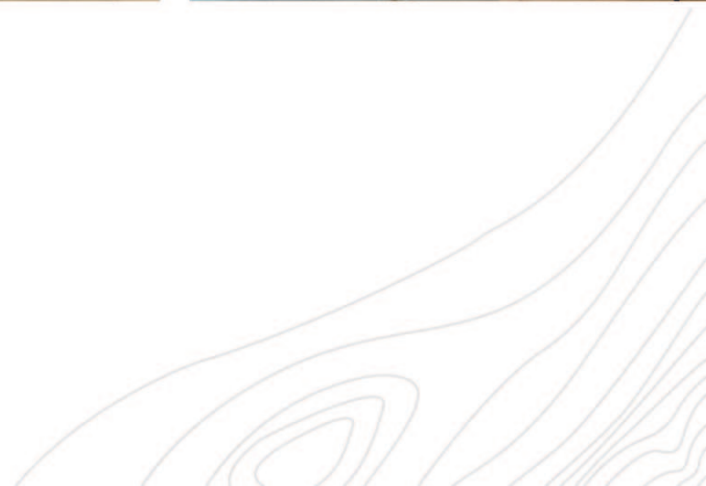
3,898 SQ. FT.
RESIDENCE

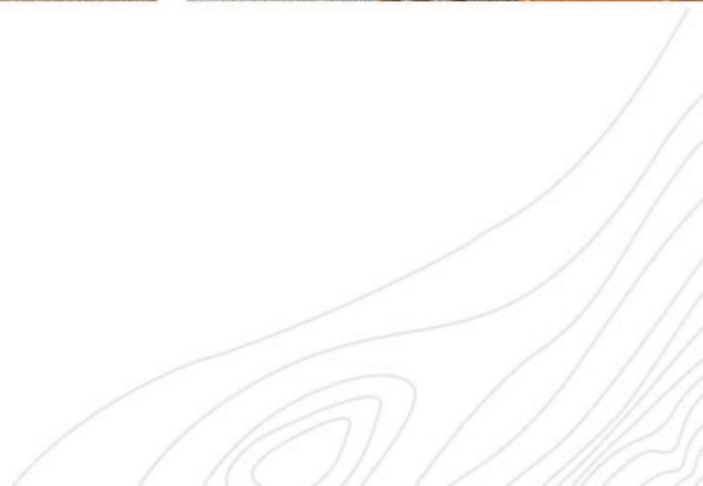
UNIQUE PENTHOUSE WITH MOUNTIAN VIEWS

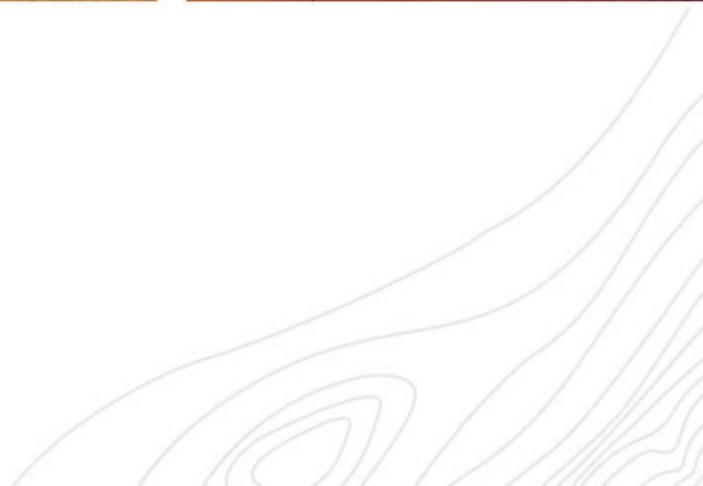


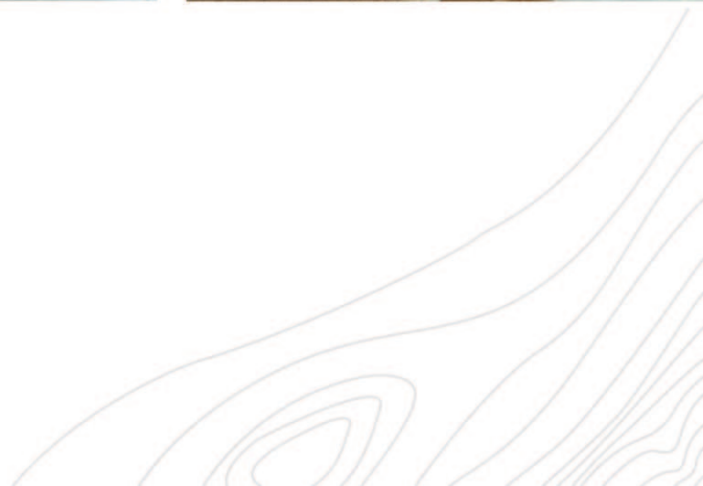
Positioned front row with demanding views of Whistler and Blackcomb mountains, enjoy enviable ski access from this unique penthouse residence. Spanning over two levels, a flexible floor plan provides ample space to gather with friends and family in one of two large open plan living areas, or on the sun-drenched deck with hot tub. Six spacious bedrooms plus den, mudroom, and access to all the amenities offered at the Le Chamois including fitness centre, outdoor heated pool, and underground parking make for comfortable extended stays. Located at the base of Blackcomb Mountain with convenient access to the new high-speed Blackcomb Gondola, magic chairlift, shops, and restaurants, it doesn't get better than this. Nightly rentals & unlimited owner usage permitted.













ACCESS TO ALL



OWNER USAGE

Phase I zoning allowing unlimited owner usage as well as the ability to rent nightly.



AMENITIES

Access to the Le Chamois amenities such as fitness centre, ski storage, outdoor heating swimming pool & hot tub.



BIKING & HIKING TRAILS

Quick and convenient access to a multitude of Whistler's best trail networks including Valley Trail.

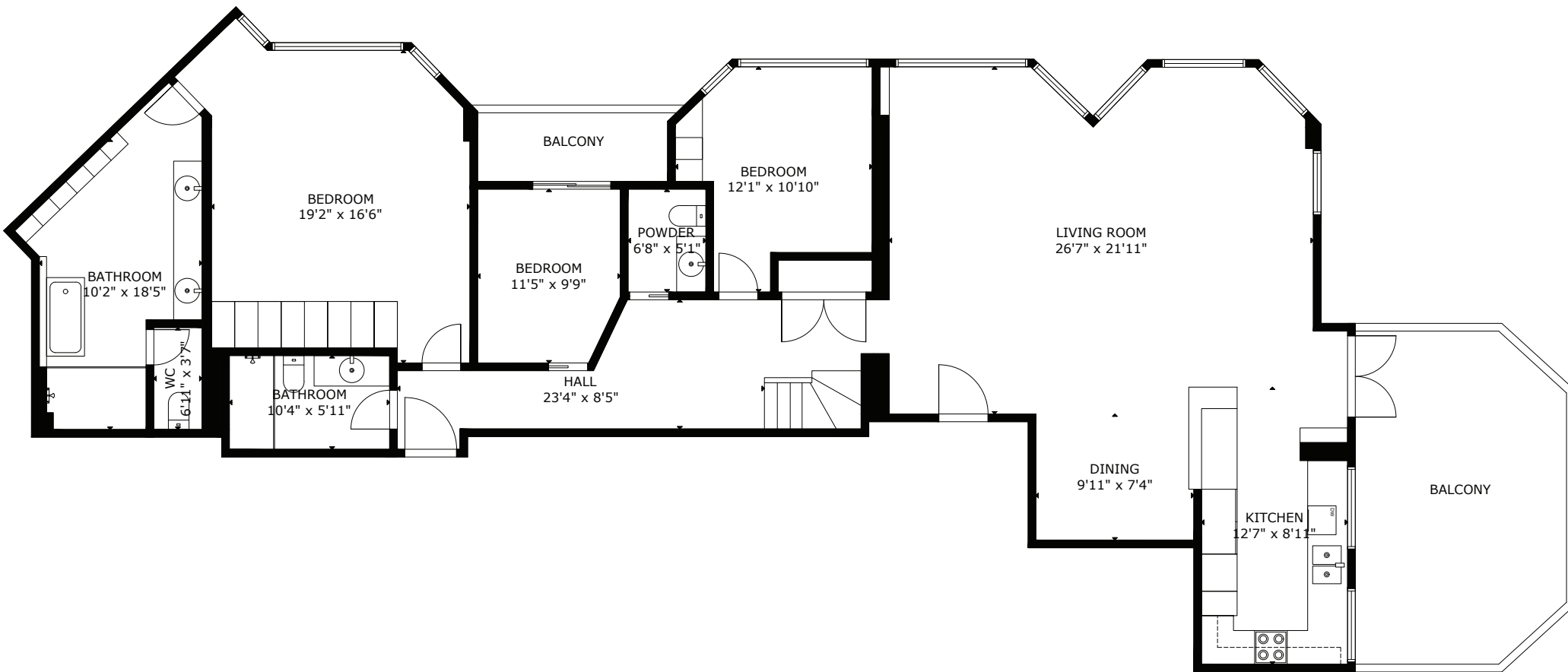


BLACKCOMB MOUNTAIN

Blackcomb Gondola is right at your doorstep, along with restaurants, shops and a short scenic walk to Whistler Village.

501.601 LE CHAMOIS

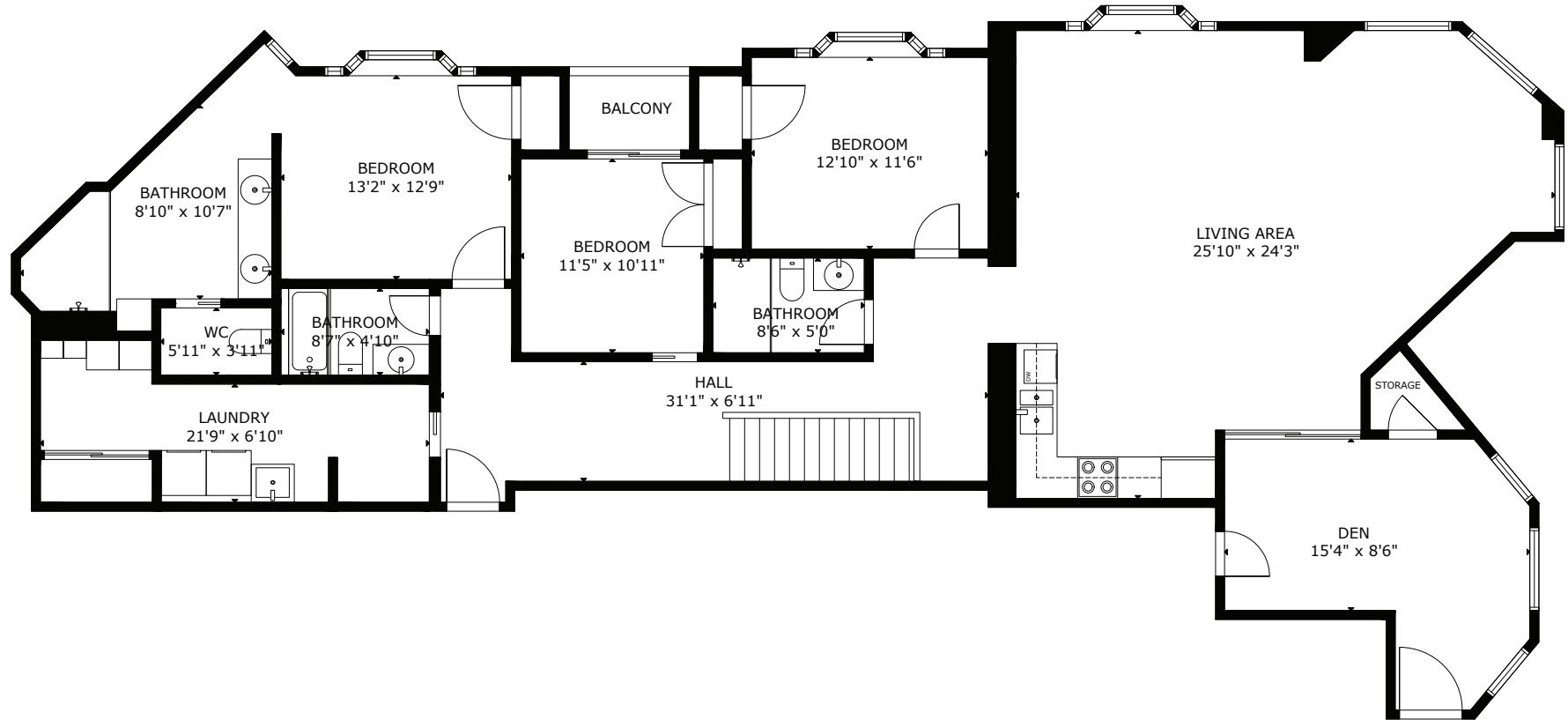
MAIN FLOOR



MEASUREMENT ARE APPROXIMATE, ACTUALS MAY VARY. MEASUREMENTS MAY INCLUDE NON-CONFORMING SPACE.

501.601 LE CHAMOIS

UPPER FLOOR



MEASUREMENT ARE APPROXIMATE, ACTUALS MAY VARY. MEASUREMENTS MAY INCLUDE NON-CONFORMING SPACE.