

# 9269 WEDGEMOUNT PLATEAU



**PANORAMIC  
PLATEAU OF  
WEDGEWOODS**

5  
BEDROOMS

4,566 SQ.FT.  
RESIDENCE

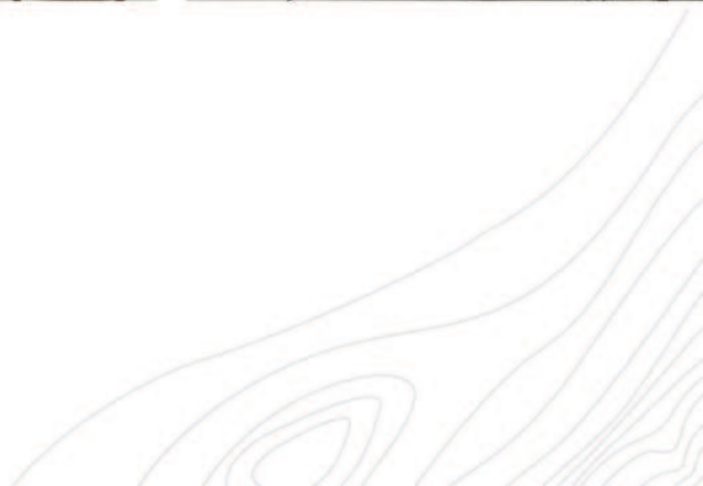
5.5  
BATHROOMS

0.561 ACRES  
LOT

# SOPHISTICATED COMFORT



Located in Whistler's Wedgewood estate community, soak in big mountain views and sophisticated comfort from this beautifully crafted contemporary residence—all just 15 minutes from the slopes. An abundance of natural light fills the open plan living area, offering seamless indoor-outdoor living connected by custom glazing to a large, covered deck, offering a standing invitation to sip your morning coffee or enjoy the alpine glow with a glass of wine. Premium finishes & luxury materials, including custom millwork throughout the home, are complemented by thoughtful & functional spaces, including an entertainment level with golf simulator, five spacious bedrooms, large mudroom, wine cellar and hot tub. Offering a tranquil, yet active setting, enjoy a traffic-free commute to Whistler, along with access to private neighbourhood amenities including a gym, tennis court and pickle ball court. Zoning allows for short term rentals.





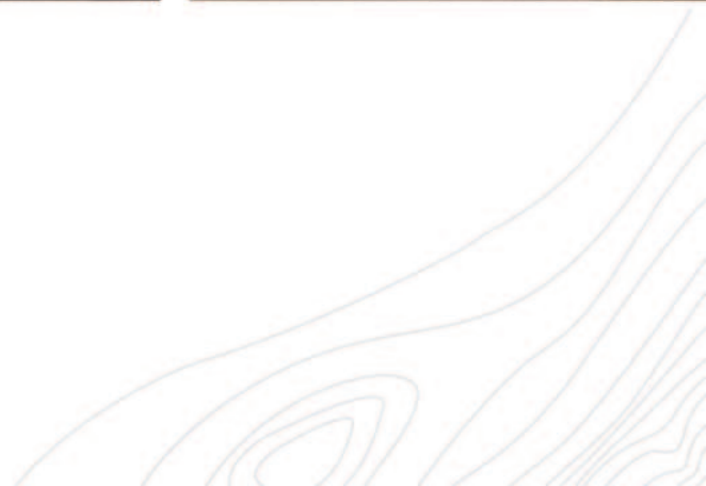
SEAMLESS INDOOR-OUTDOOR LIVING,  
IDEAL FOR ENTERTAINING

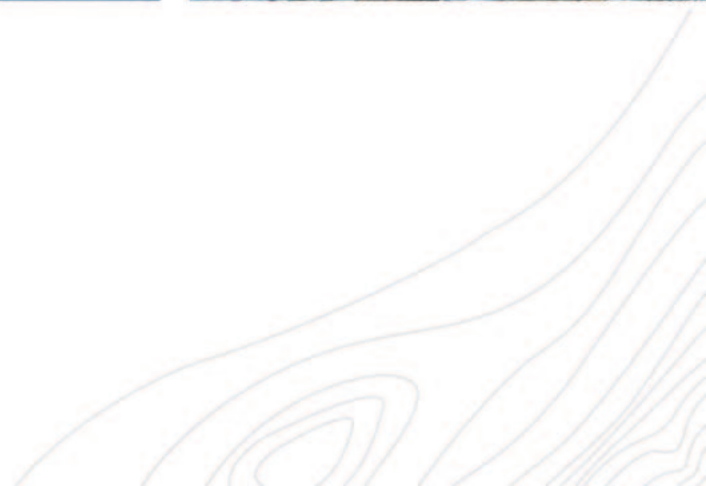
INDOOR GOLF SIMULATOR



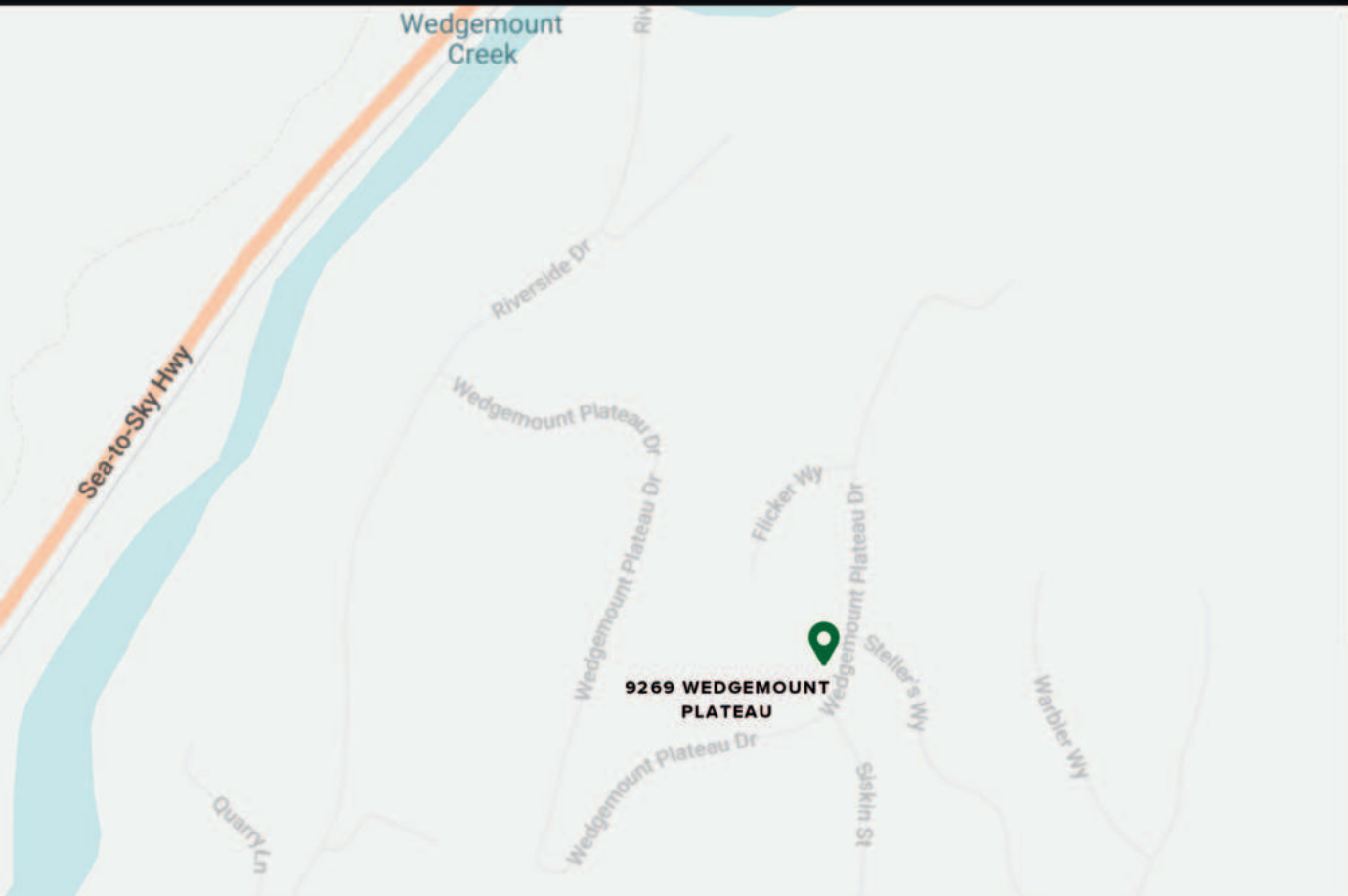
MUDROOM WITH PLENTY OF  
STORAGE







# ACCESS TO ALL



## PRIVATE NEIGHBOURHOOD AMENITIES

Whistler's WedgeWoods estate-home community offers private neighbourhood amenities such as a gym, tennis and pickle-ball courts.



## TRAFFIC-FREE COMMUTE

Situated north of Whistler Village allowing a traffic-free commute only 15 minutes drive away.



## MOUNTAIN VIEWS

Elevated position allows you to enjoy expansive, panoramic mountain views.

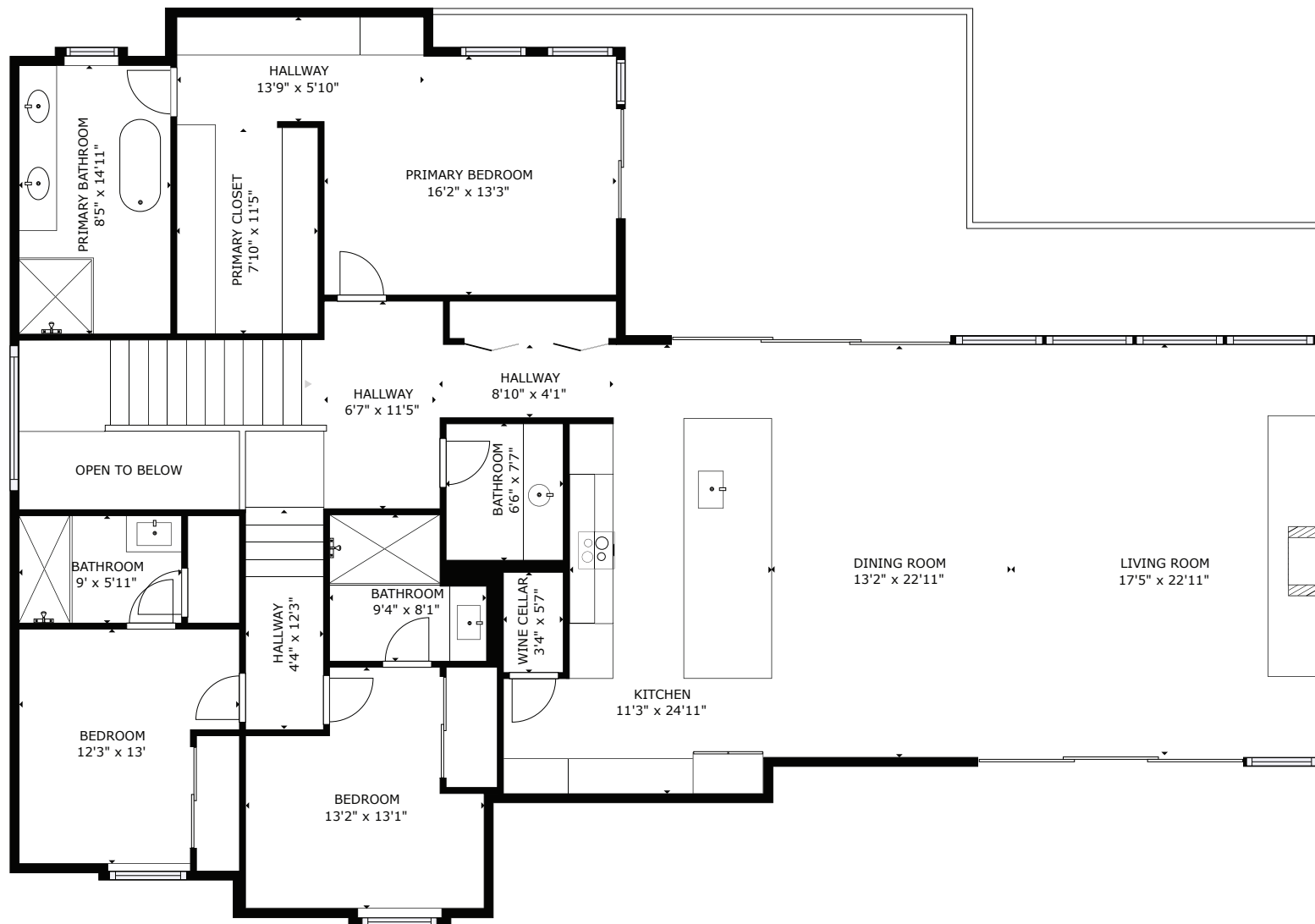


## HIKING & BIKING TRAILS

WedgeWoods has a variety of famous hiking and biking trails for you to explore.

# 9269 WEDGEMOUNT PLATEAU

## UPPER LEVEL

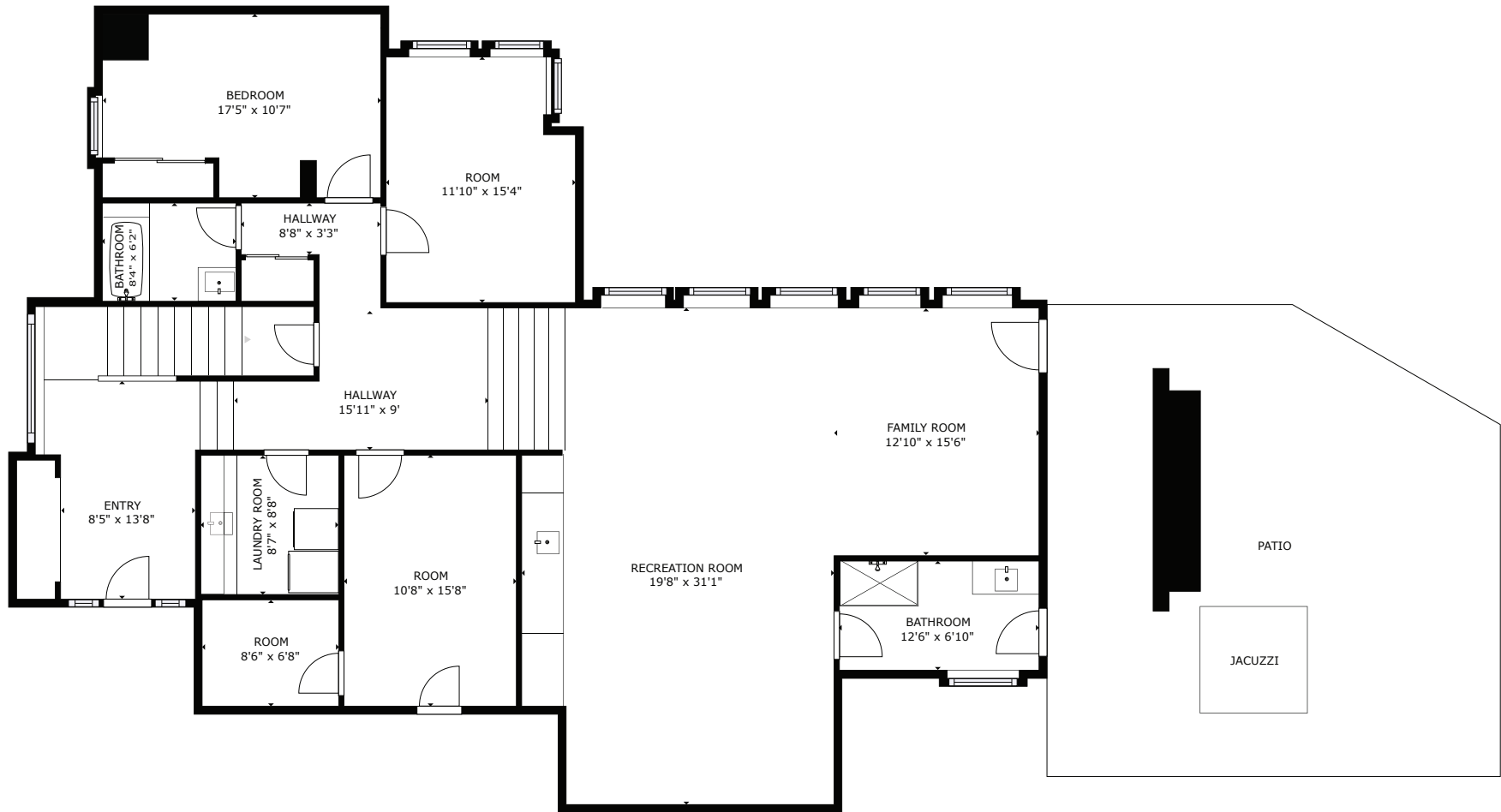


MEASUREMENT ARE APPROXIMATE, ACTUALS MAY VARY. MEASUREMENTS MAY INCLUDE NON-CONFORMING SPACE.



# 9269 WEDGEMOUNT PLATEAU

## LOWER LEVEL



MEASUREMENT ARE APPROXIMATE, ACTUALS MAY VARY. MEASUREMENTS MAY INCLUDE NON-CONFORMING SPACE.