

3258 ARCHIBALD
WAY

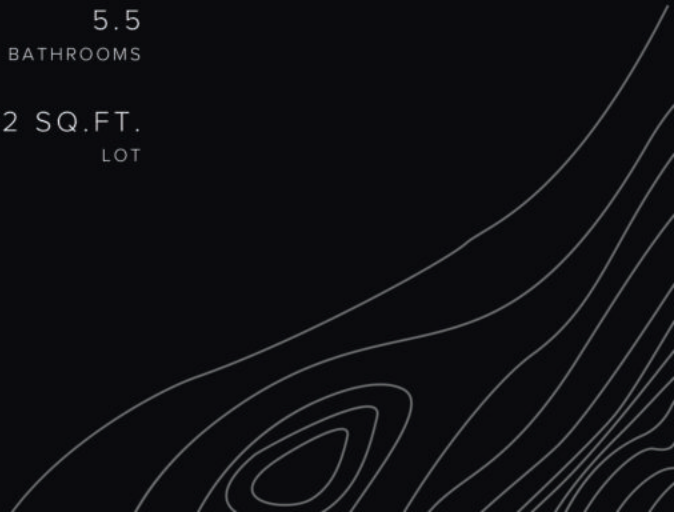
ALTA LAKE
LAGOON
RESIDENCE

5+
BEDROOMS

5,544 SQ.FT.
RESIDENCE

5.5
BATHROOMS

10,882 SQ.FT.
LOT

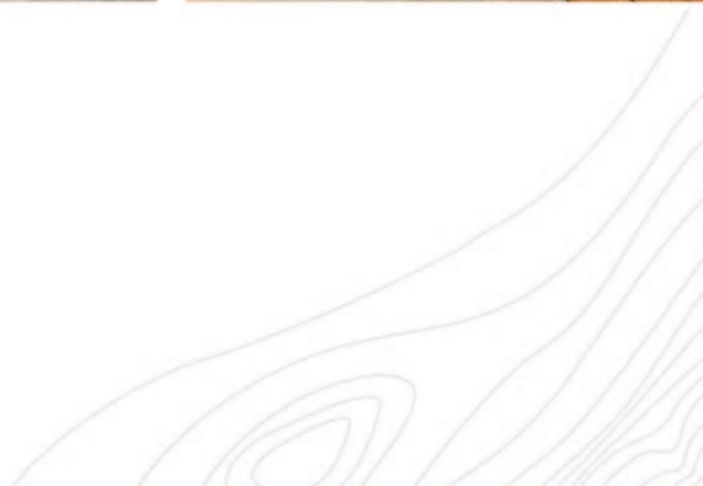


A SCULPTURAL WORK OF ART



Situated on the shores of Alta Lake Lagoon, soak in mountain & lake views from this design forward residence positioned with direct lake access to Whistler's favourite swimming lake. Angular Cor-Ten steel seamlessly blends into the exterior surround, while the crisp pallet of steel, concrete, & oak cabinetry throughout perfectly complements expansive windows & big views. At the heart of this home, the main living area brings together an extensive chef's kitchen, spacious formal dining area & welcoming living area, all dominated by lake views, creating modern yet practical spaces for family living. A tiered garden leads to a large private dock, while on land, the property has taken full advantage of the outdoor space to include hot tub, fire pit seating area, dining area & lawn.

Designed by the award-winning team at Measured Architecture, & built by EVR Fine Homes, the residence offers unparalleled attention to detail & craftsmanship. Additional features include family room, steam room & numerous flex rooms. Conveniently located in the sought after Alta Vista neighbourhood with direct access to the Valley Trail, take a leisurely walk to Whistler Village or enjoy one of the main surrounding biking or hiking trails.





LARGE OUTDOOR ENTERTAINMENT
AREA WITH FIREPIT, SPA & OUTDOOR
SAUNA

LARGE KITCHEN FOR
ENTERTAINING



ALTA LAKE ACCESS VIA PRIVATE
DOCK

DESIGN & CONSTRUCTION

BUILDER

EVR Fine Homes

ARCHITECT

Measured Architecture: Piers Cuddington
& Clinton Cuddington

INTERIOR DESIGN

Measured Architecture

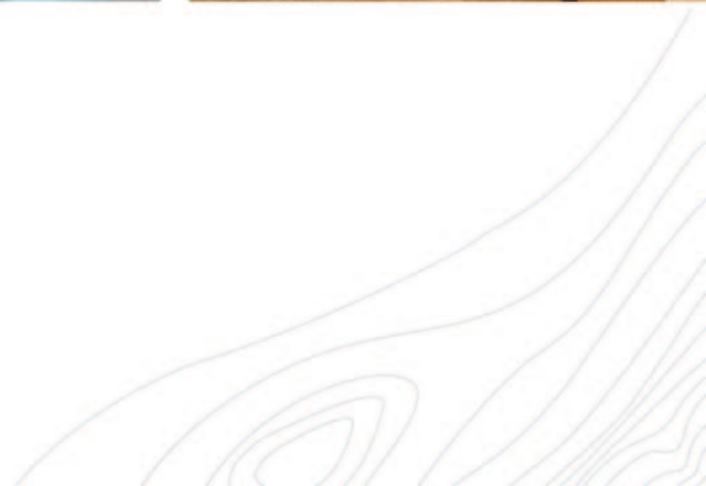
EXTERIOR

- Cor-Ten roof and cladding
- Concrete and black-powder-coated steel designed to integrate with surrounding landscape
- Floor to ceiling windows
- Direct access to Alta Lake Lagoon

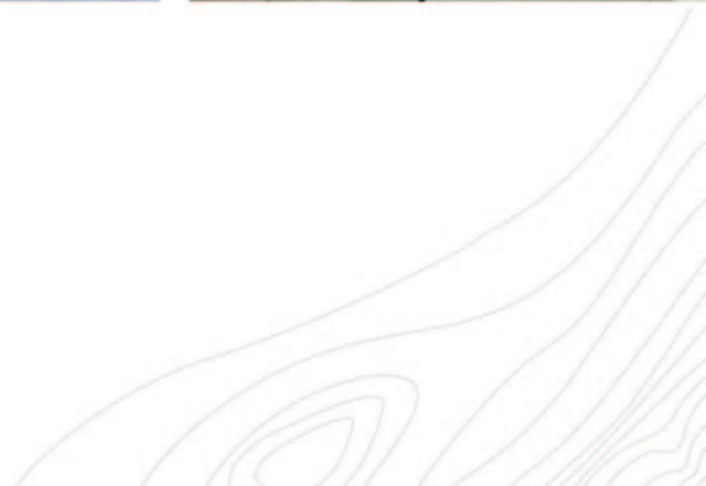
INTERIOR FINISHES & SYSTEMS

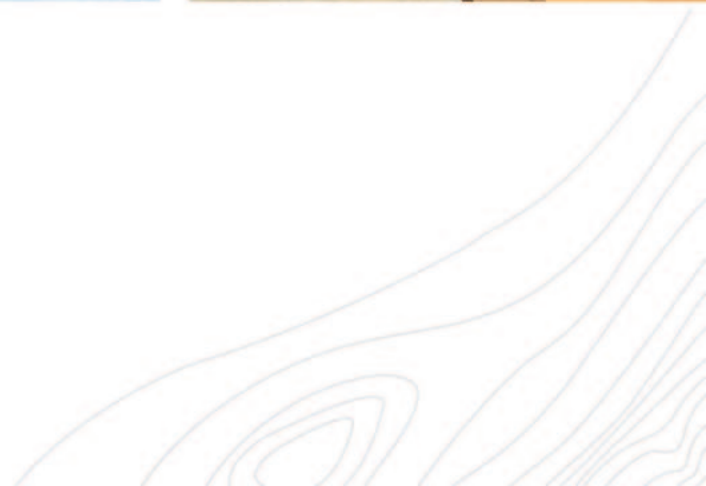
- Steel, concrete, and oak cabinetry
- Exterior materials drawn through the interiors for continuity between inside & outside.
- Cor-Ten steel walls
- Stained cedar ceiling (front entrance)
- Hot-rolled steel walls and staircase
- Automated home system throughout

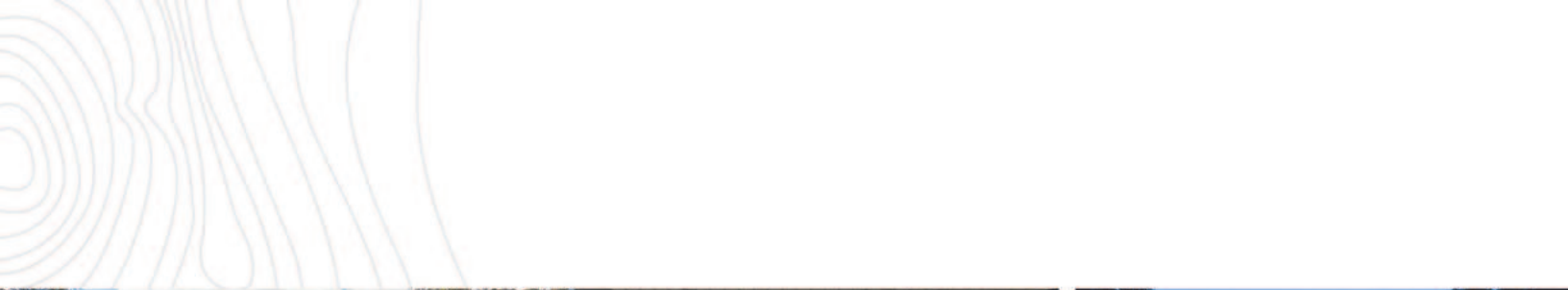












ACCESS TO ALL



WATERFRONT & PRIVATE DOCK

Private dock with direct access to Alta Lake.



CENTRAL LOCATION

An easy stroll to restaurants, shops and bars within Whistler Village.



HIKING & BIKING TRAILS

Quick and convenient access to both hiking & biking trails along with the Valley Trail network!

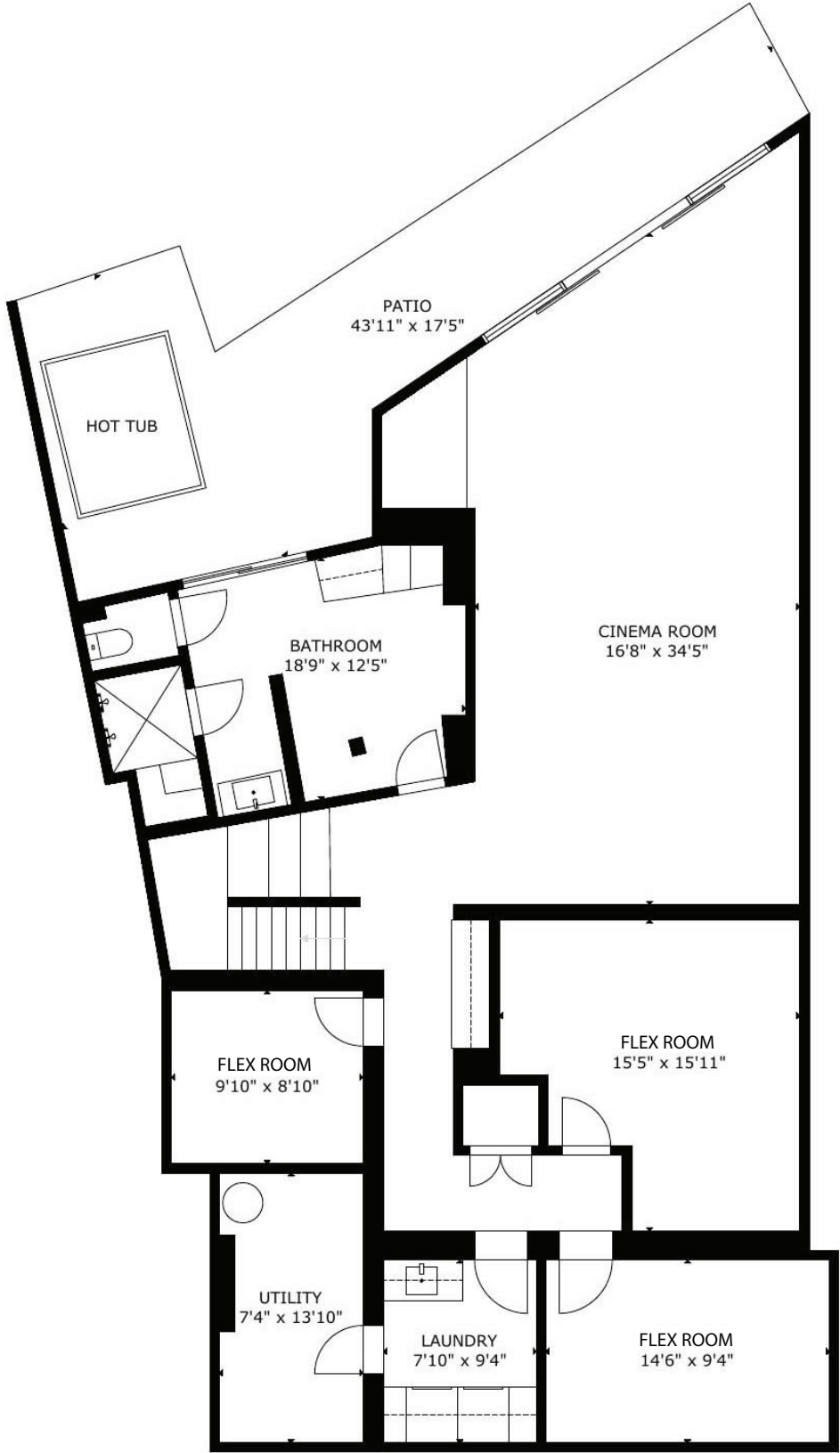


FAVOURITE SWIMMING LAKE

Close to the popular Lakeside Park and paddling distance to Rainbow Park.

3258 ARCHIBALD WAY

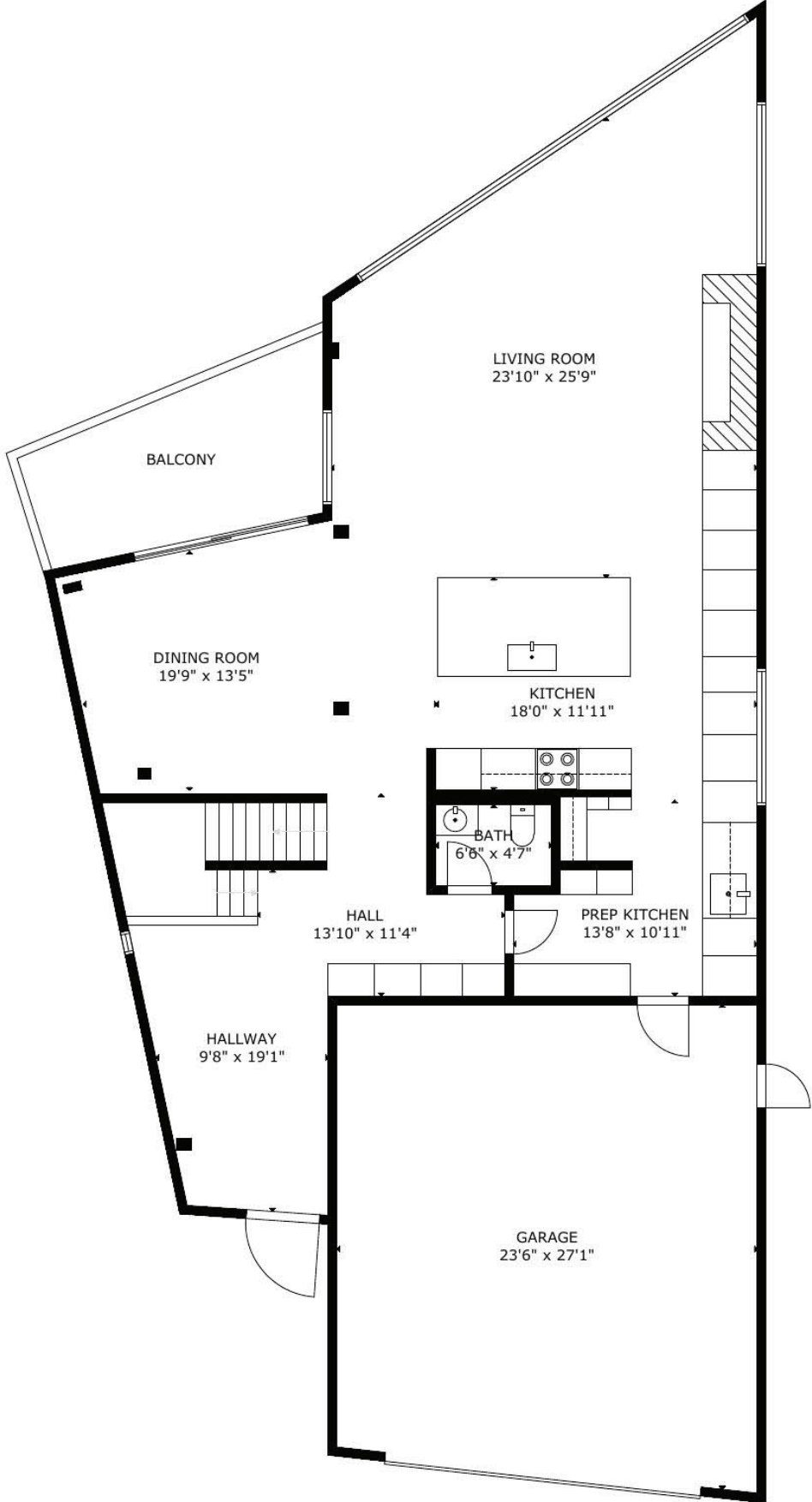
LOWER FLOOR



MEASUREMENT ARE APPROXIMATE, ACTUALS MAY VARY. MEASUREMENTS MAY INCLUDE NON-CONFORMING SPACE.

3258 ARCHIBALD WAY

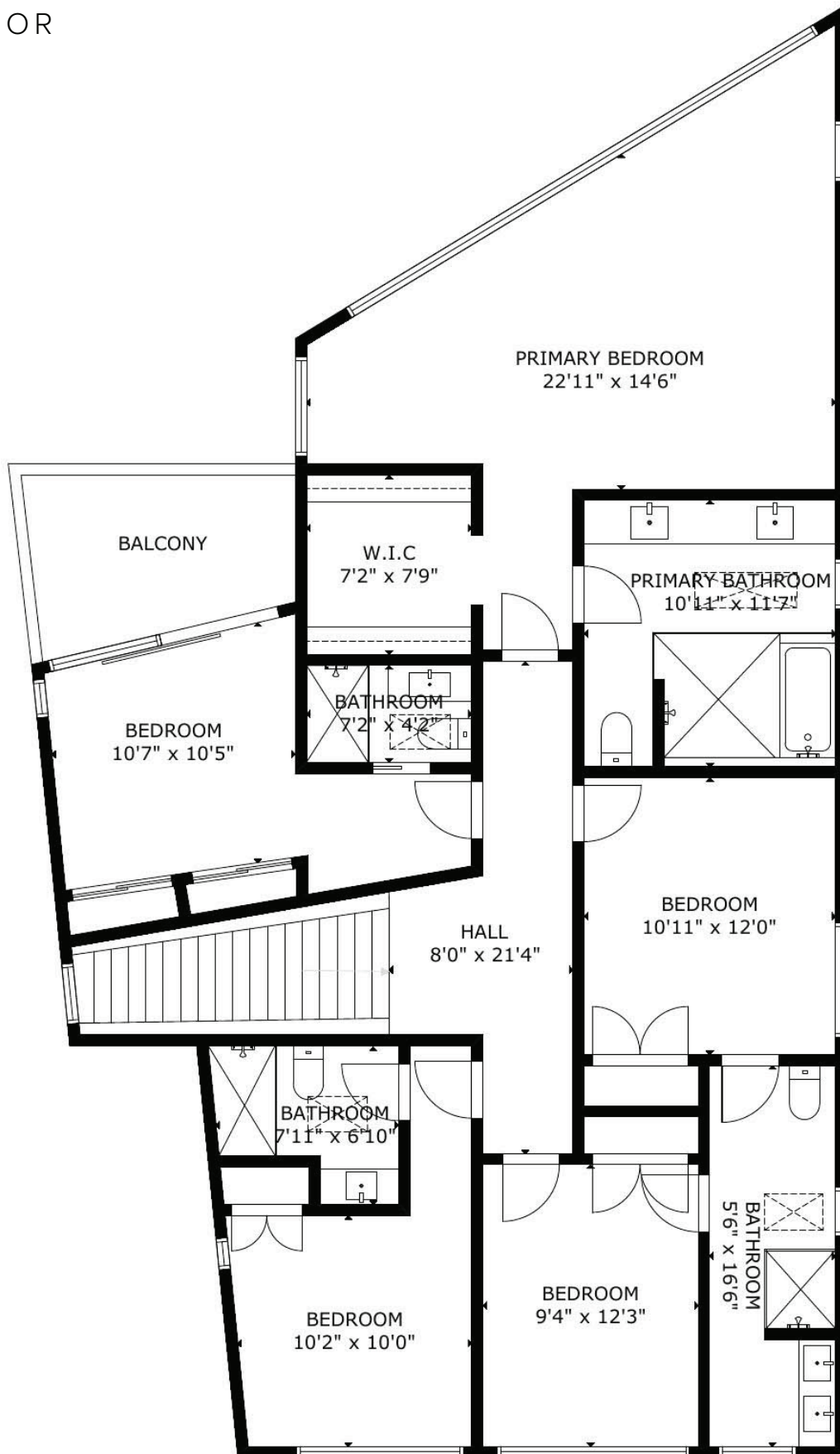
MAIN FLOOR



MEASUREMENT ARE APPROXIMATE, ACTUALS MAY VARY. MEASUREMENTS MAY INCLUDE NON-CONFORMING SPACE.

3258 ARCHIBALD WAY

UPPER FLOOR



MEASUREMENT ARE APPROXIMATE, ACTUALS MAY VARY. MEASUREMENTS MAY INCLUDE NON-CONFORMING SPACE.