

3144 ST MORITZ CRESCENT



**EXTENSIVELY
RENOVATED
RESIDENCE**

2
BEDROOMS

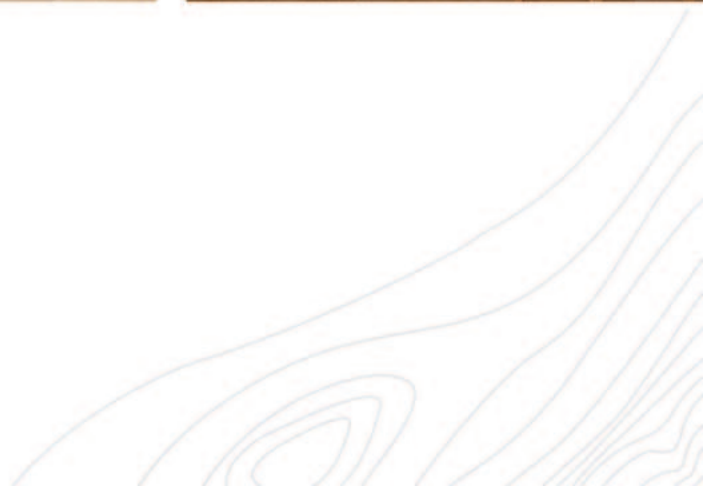
2
BATHROOMS

1,193 SQ.FT.
RESIDENCE

WARMTH, CHARM & QUALITY CRAFTSMANSHIP



With Alta Lake below and sunset views above, the day melts away as you unwind on the private SW facing patio of this extensively renovated 2-bedroom townhome in Blueberry Hill Estates. Merging the contemporary vision of celebrated designer Sophie Burke with the quality craftsmanship of Gavan Construction, this townhome exudes the warmth and charm of a modern Whistler ski home, with wood burning fireplace, vaulted ceilings, large pantry, storage & covered carport. Ideally located offering convenient and safe Valley Trail routes to Lakeside Park, the Whistler Golf Course and Whistler Village, along with mountain biking, hiking and direct lake access from the Blueberry Trail. Nightly rentals are permitted, and GST is not applicable.



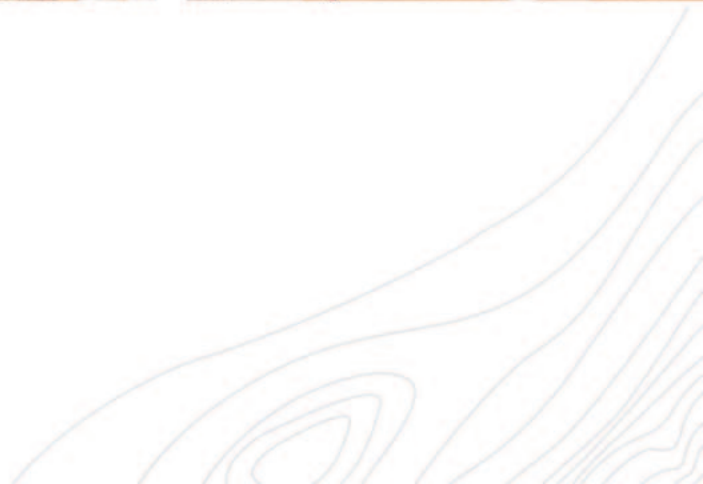


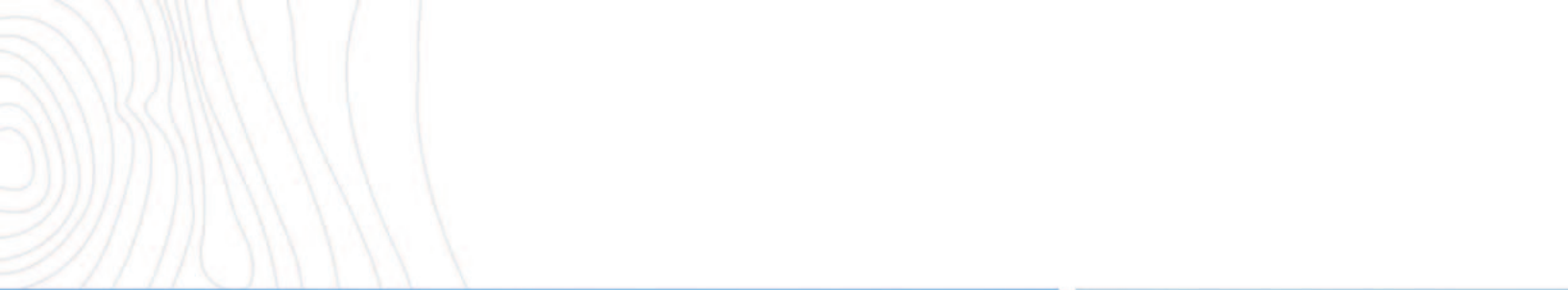
VAULTED CEILINGS ALLOWING AN INFLUX OF NATURAL LIGHT

AMPLE STORAGE IN LARGE PANTRY/ LAUNDRY



PRIVATE SOUTH-WEST FACING PATIO WITH MOUNTAIN & LAKE VIEWS





ACCESS TO ALL



ALTA LAKE NEARBY

Easy access to Alta Lake's Blueberry Docks and Lakeside Park.



WALK TO VILLAGE

Walking distance to Whistler Village



CENTRAL LOCATION

An easy stroll to restaurants, shops and bars within Whistler Village.

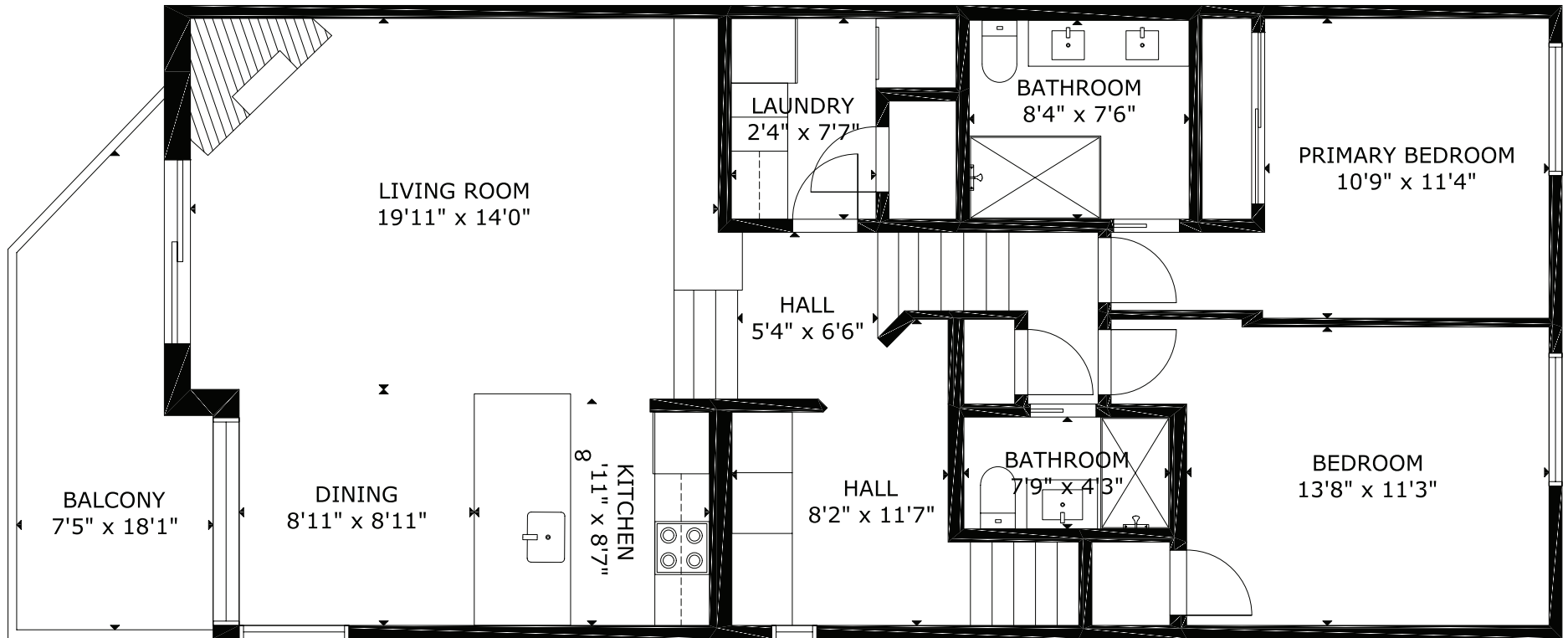


BIKING & HIKING TRAILS

Quick and convenient access to a multitude of Whistler's best trail networks including Valley Trail.

3144 ST. MORITZ

BLUEBERRY HILL ESTATE



MEASUREMENT ARE APPROXIMATE, ACTUALS MAY VARY. MEASUREMENTS MAY INCLUDE NON-CONFORMING SPACE.



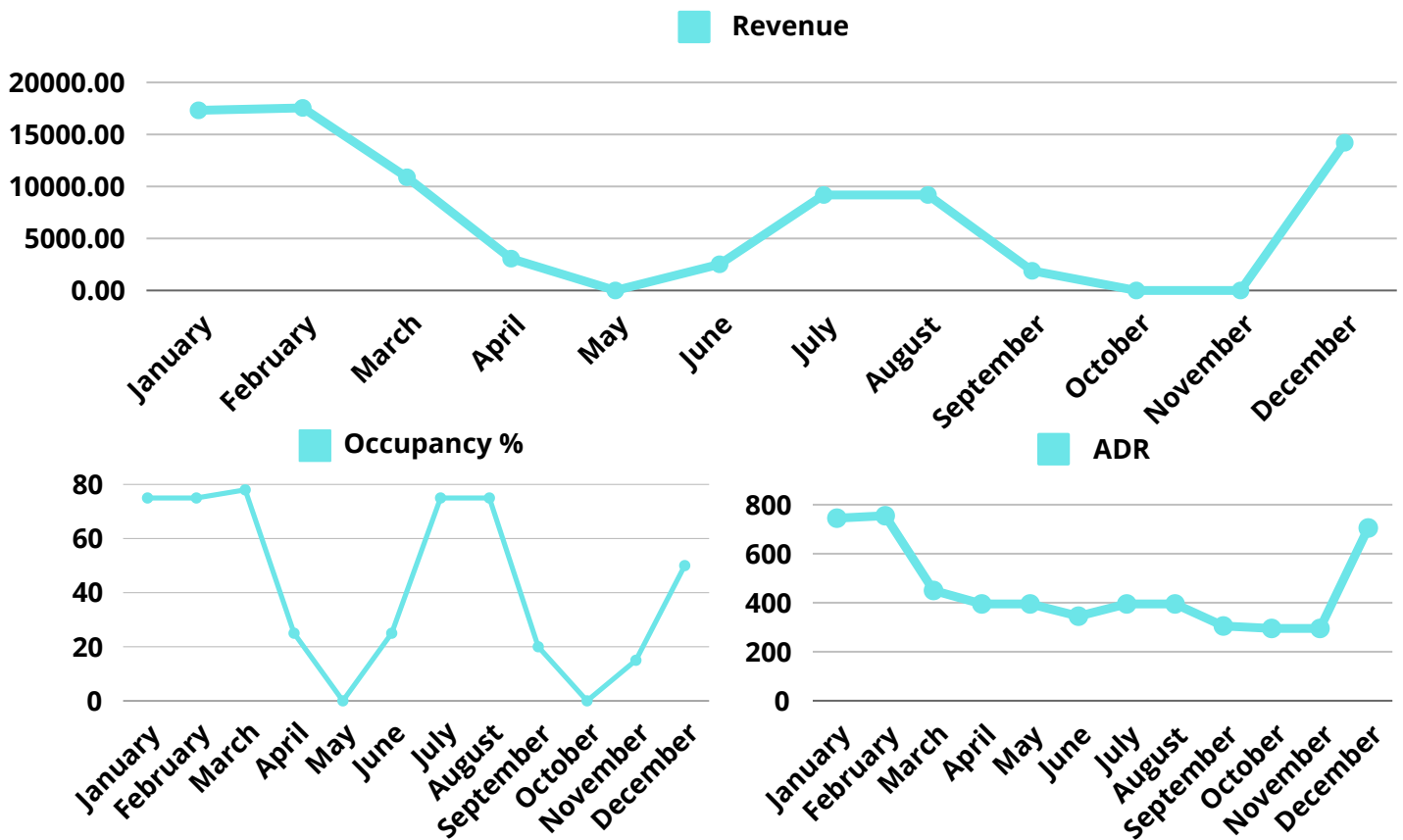
ALOHA WHISTLER ACCOMMODATIONS

MANAGING SELECT SLOPESIDE HOMES

REVENUE FORECAST

Property	3144 St. Moritz Crescent
Property Details	2 bed, 2 bath
Amenities	Beautifully Renovated, Close to Lakes, Spacious

Gross Annual Revenue	Average Daily Rate	Occupancy Rate
\$85,800.25	\$454.00	42%



Note, these numbers do not reflect owner usage. These numbers are to be used as a guideline only.

**PREPARED BY LOUISE STOKES
HEAD OF BUSINESS**

Aloha Whistler Accommodations Ltd.
alohaowners@alohawhistler.com

+1 604 938 6263