



7289
FITZSIMMONS
ROAD SOUTH

LOCATED ON
FITZSIMMONS
CREEK

5
BEDROOMS

3,406 SQ.FT.
RESIDENCE

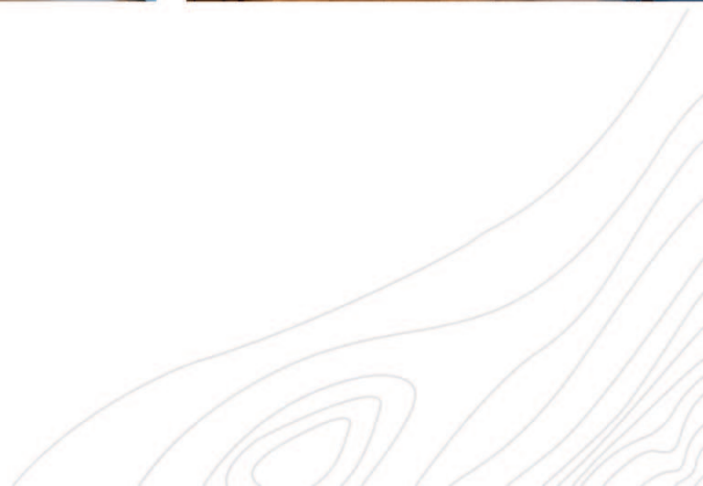
7
BATHROOMS

9,044 SQ.FT.
LOT

QUALITY CRAFTSMANSHIP



The sounds of Fitzsimmons Creek surround this luxury residence where contemporary design and quality craftsmanship merge together to offer the best of Whistler living, all within a few minutes' walk to Whistler Village and Lost Lake Park. At the heart of the home, the open concept design seamlessly welcomes outdoor living to your entertaining space with an expansive covered deck with views out to Fitzsimmons Creek and large grassy yard with a sunny south-west exposure. The spacious 5-bedroom retreat gives homeowners a blend of functional design, and discerning privacy offering media room, bar, hot tub, and gym, plus the conveniences of an oversized mudroom, ample storage, and air conditioning to compliment a modern mountain lifestyle. Ideally positioned in the sought-after White Gold neighbourhood, you're only moments away from your next adventure.



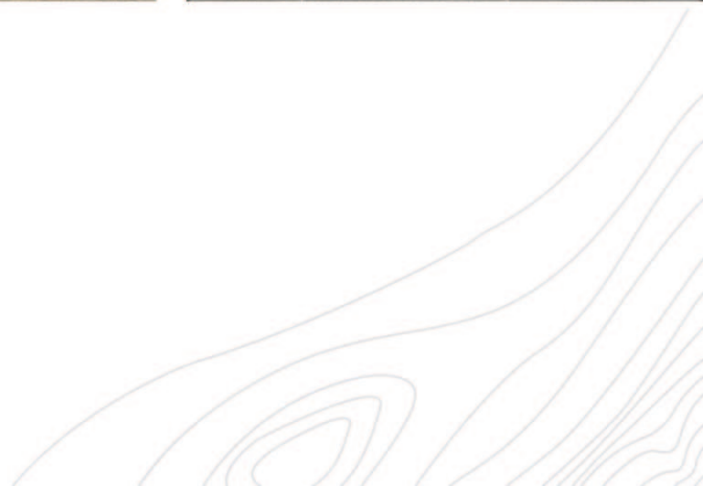


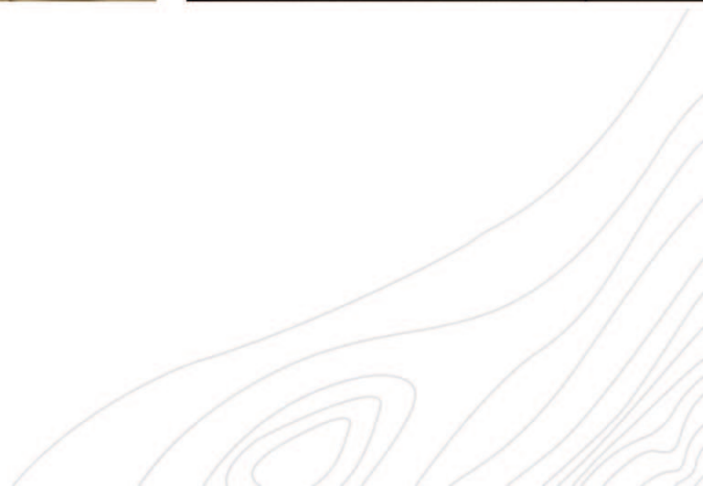
LUXURIOUS PRIMARY BATHROOM

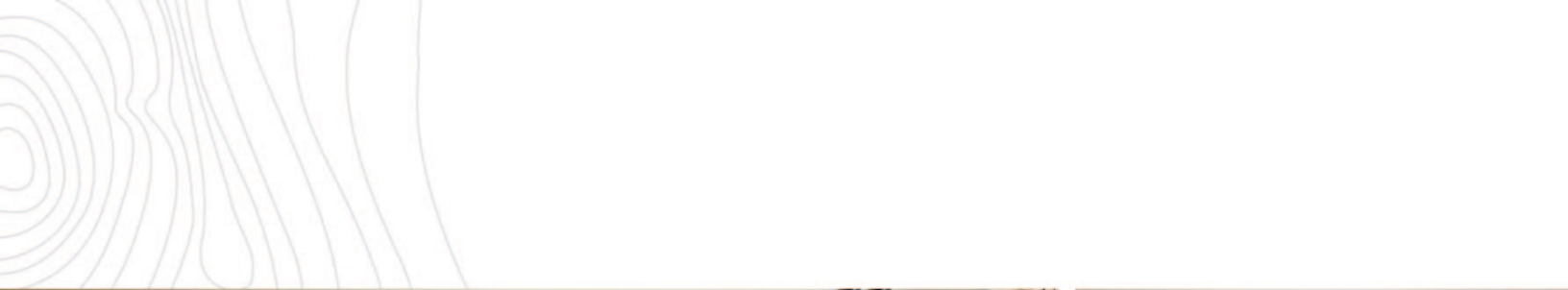
SEAMLESS TRANSITION BETWEEN
OUTDOOR LIVING & YOUR
ENTERTAINING SPACE

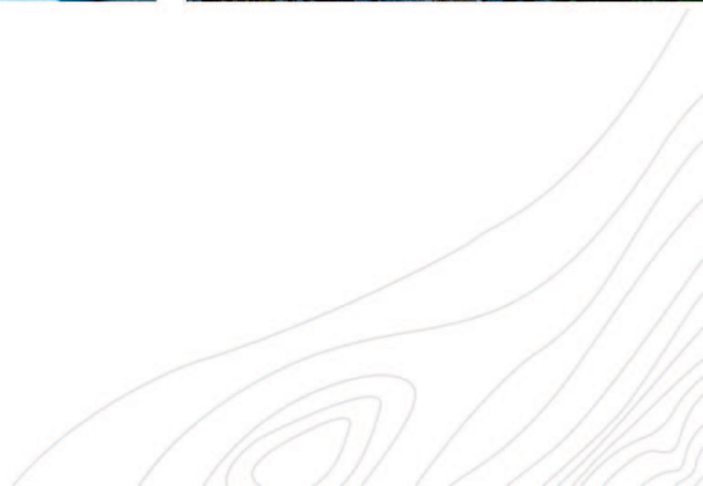


ENJOY SOUTHWEST VIEWS OF
FITZSIMMONS CREEK & WHISTLER
MOUNTAIN









ACCESS TO ALL



WALK TO VILLAGE

A short walk to Whistler Village.



LOST LAKE PARK

Close to Whistler's warmest lake with dock and dog park.



POPULAR NEIGHBOURHOOD

Located in the sought-after White Gold neighbourhood.

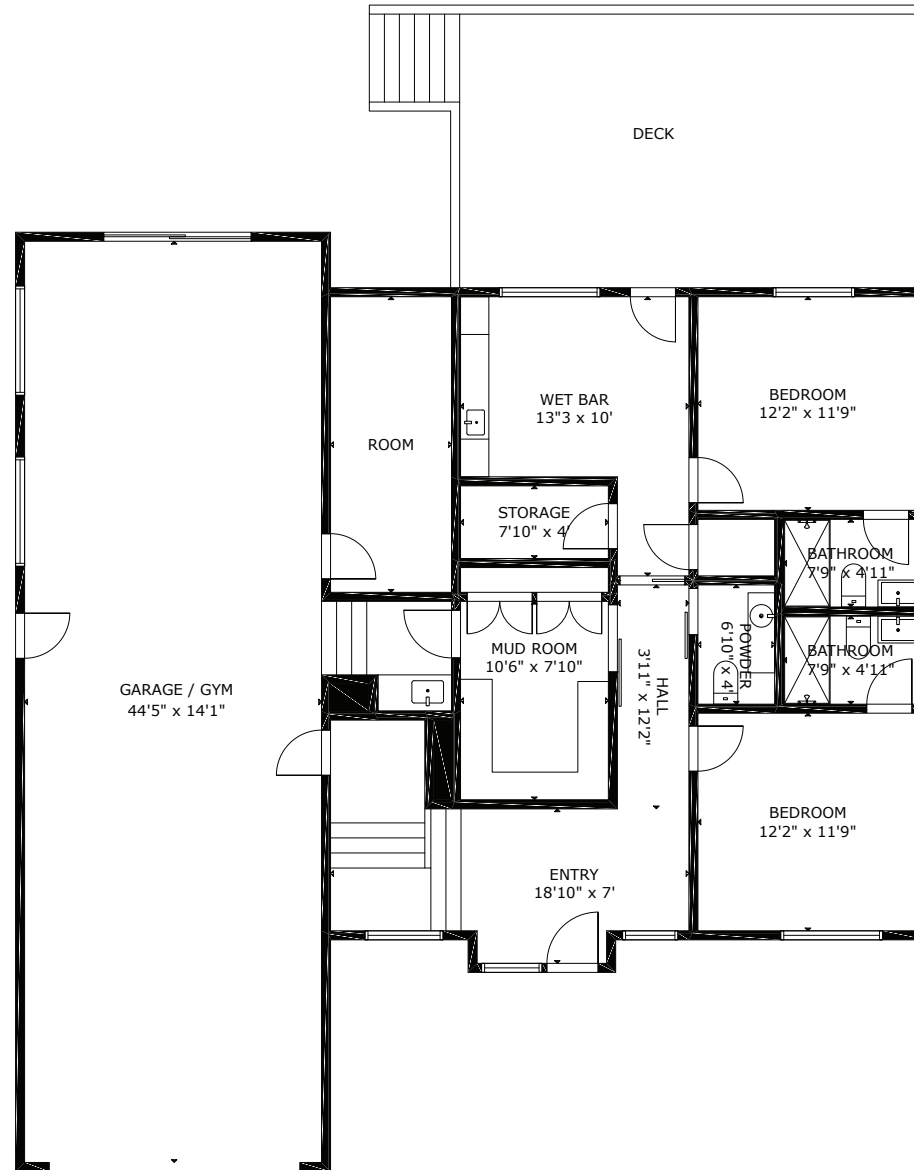


HIKING & BIKING TRAILS

Easy access to Lost Lake's extensive hiking, biking and cross country trail network.

7289 FITZSIMMONS ROAD SOUTH

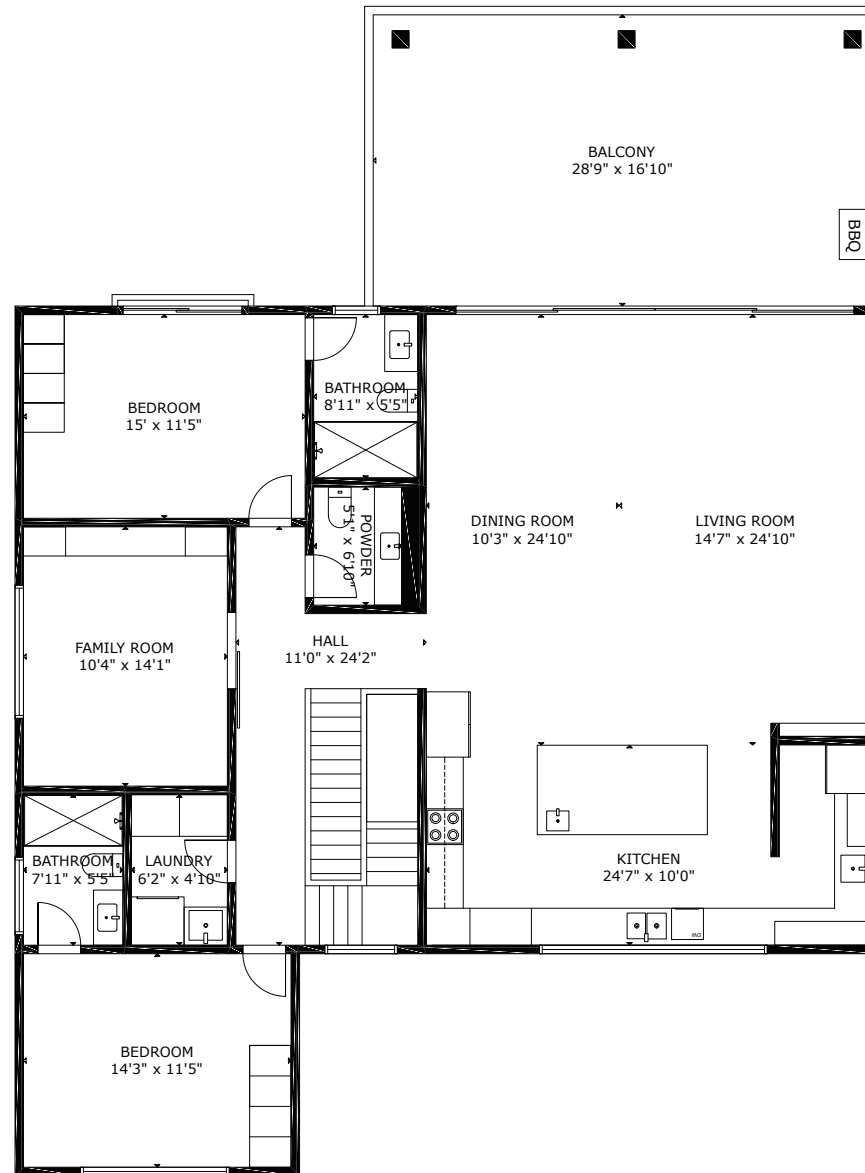
LOWER LEVEL



MEASUREMENT ARE APPROXIMATE, ACTUALS MAY VARY. MEASUREMENTS MAY INCLUDE NON-CONFORMING SPACE.

7289 FITZSIMMONS ROAD SOUTH

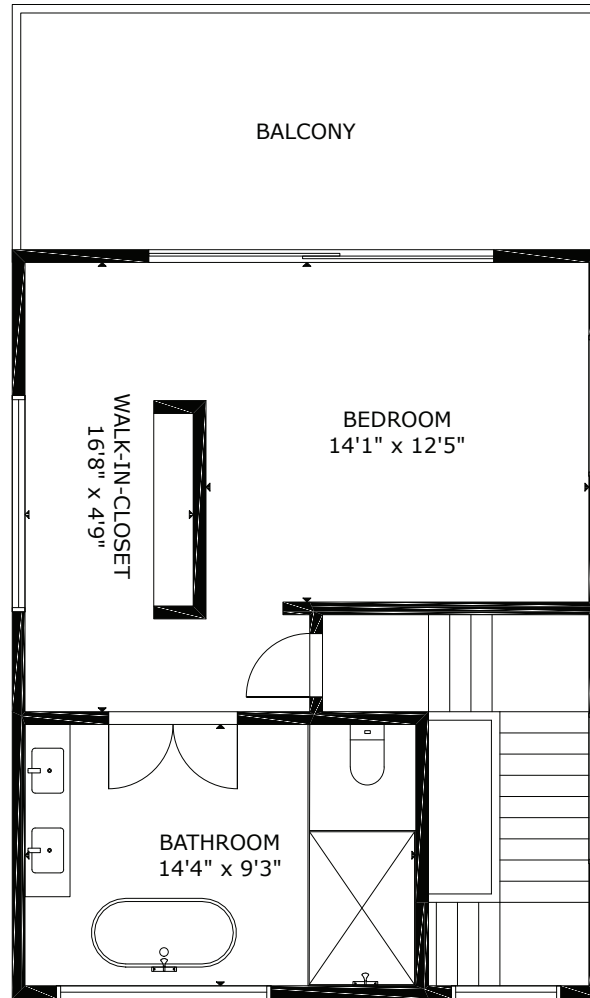
MAIN LEVEL



MEASUREMENT ARE APPROXIMATE, ACTUALS MAY VARY. MEASUREMENTS MAY INCLUDE NON-CONFORMING SPACE.

7289 FITZSIMMONS ROAD SOUTH

UPPER LEVEL



MEASUREMENT ARE APPROXIMATE, ACTUALS MAY VARY. MEASUREMENTS MAY INCLUDE NON-CONFORMING SPACE.