



6187  
EAGLE DRIVE

**CONTEMPORARY  
GREEN  
RESIDENCE**

4  
BEDROOMS

4,968 SQ.FT.  
RESIDENCE

6  
BATHROOMS

7,612 SQ.FT.  
LOT



# CONTEMPORARY & ENVIRONMENTALLY SUSTAINABLE



Located within walking distance to Whistler Village, the Valley Trail, and Whistler Golf Course, this contemporary green build reflects the community's commitment to environmental sustainability. Take in incredible views spanning Blackcomb to Wedge Mountain from the eclectic contemporary interior or enjoy from the patio in the treed and fenced garden. Interior highlights include a cook's kitchen, four en-suite bedrooms on the upper level, and oversized flex space with exterior entry, bathroom, and large storage room on the lower level. Refined solar exposure and panels, airtight wood burning fireplace, and bespoke natural finishes, are just some of this home's green considerations.





LARGE BACKYARD FOR ENTERTAINING



INCREDIBLE VIEWS  
SPANNING FROM BLACKCOMB  
TO WEDGE MOUNTAIN

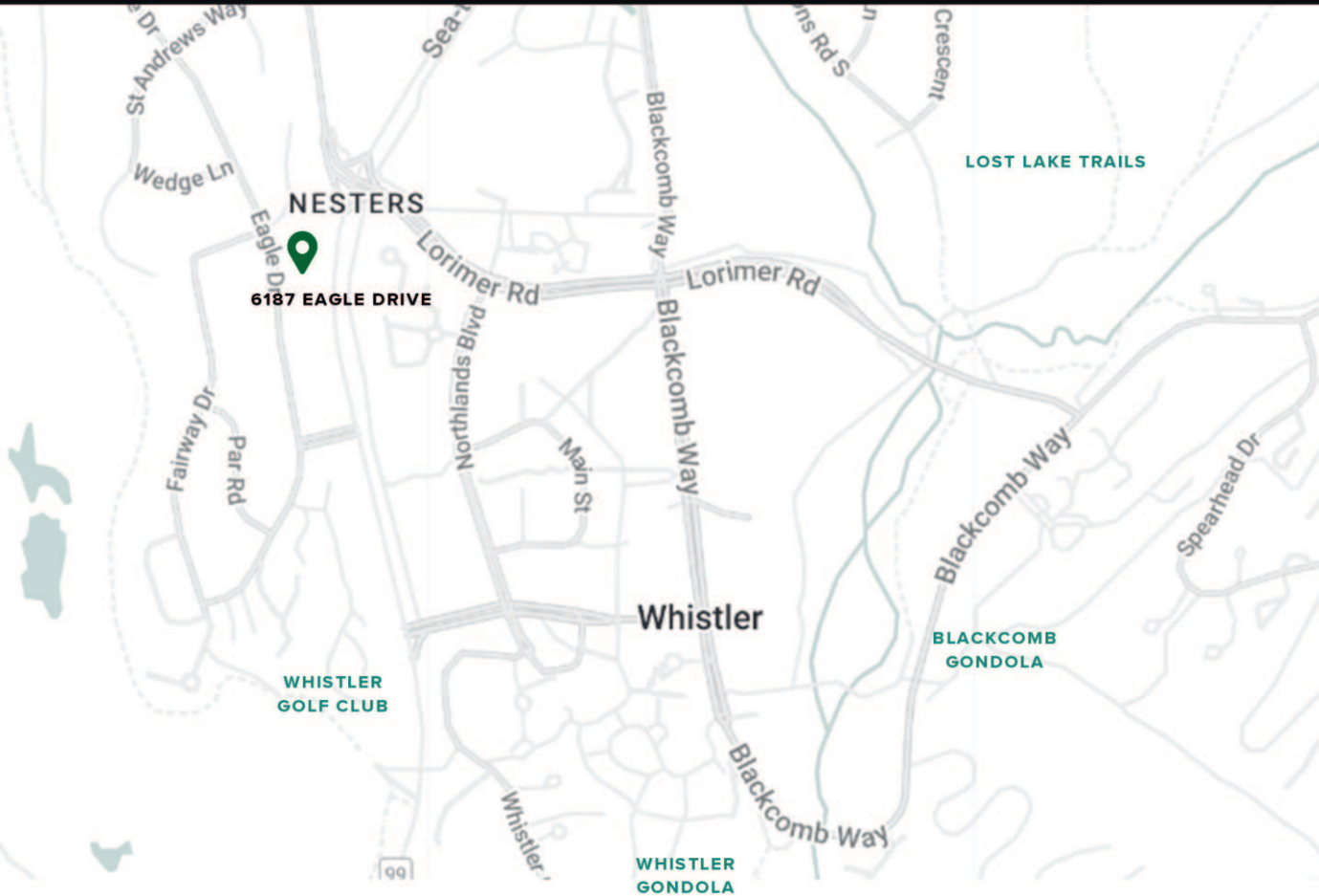


BRIGHT SUNNY EXPOSURE





# ACCESS TO ALL



## CENTRAL LOCATION

Located within walking distance to shops, restaurants, amenities and gym in Whistler Village.



## LOST LAKE TRAILS & PARK

Easy access to Lost Lake park and bike trails.



## BIKING TRAILS

Quick and convenient access to a multitude of Whistler's best trail networks including Valley Trail.

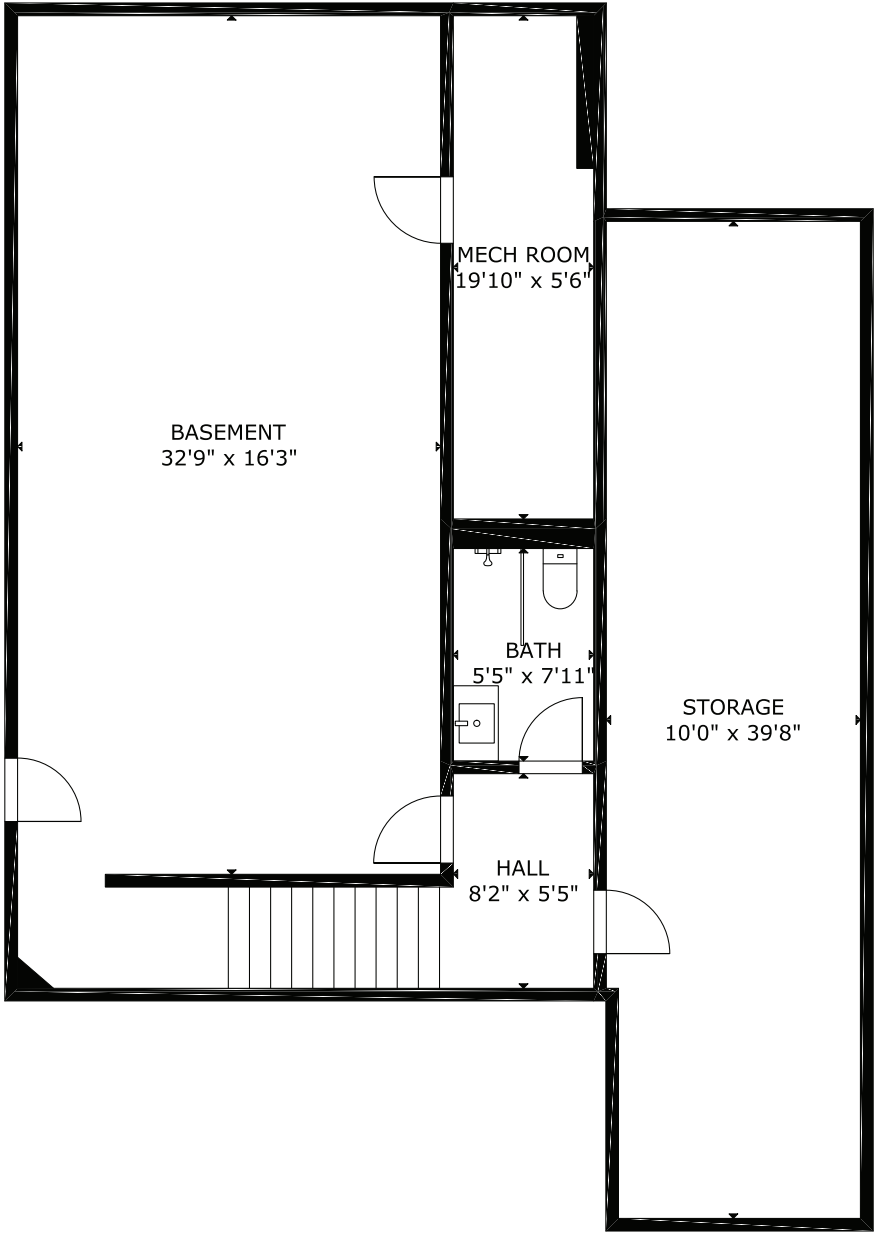


## WHISTLER GOLF CLUB

Located within walking distance to Whistler Golf Club and Driving Range.

# 6187 EAGLE DRIVE

## LOWER LEVEL

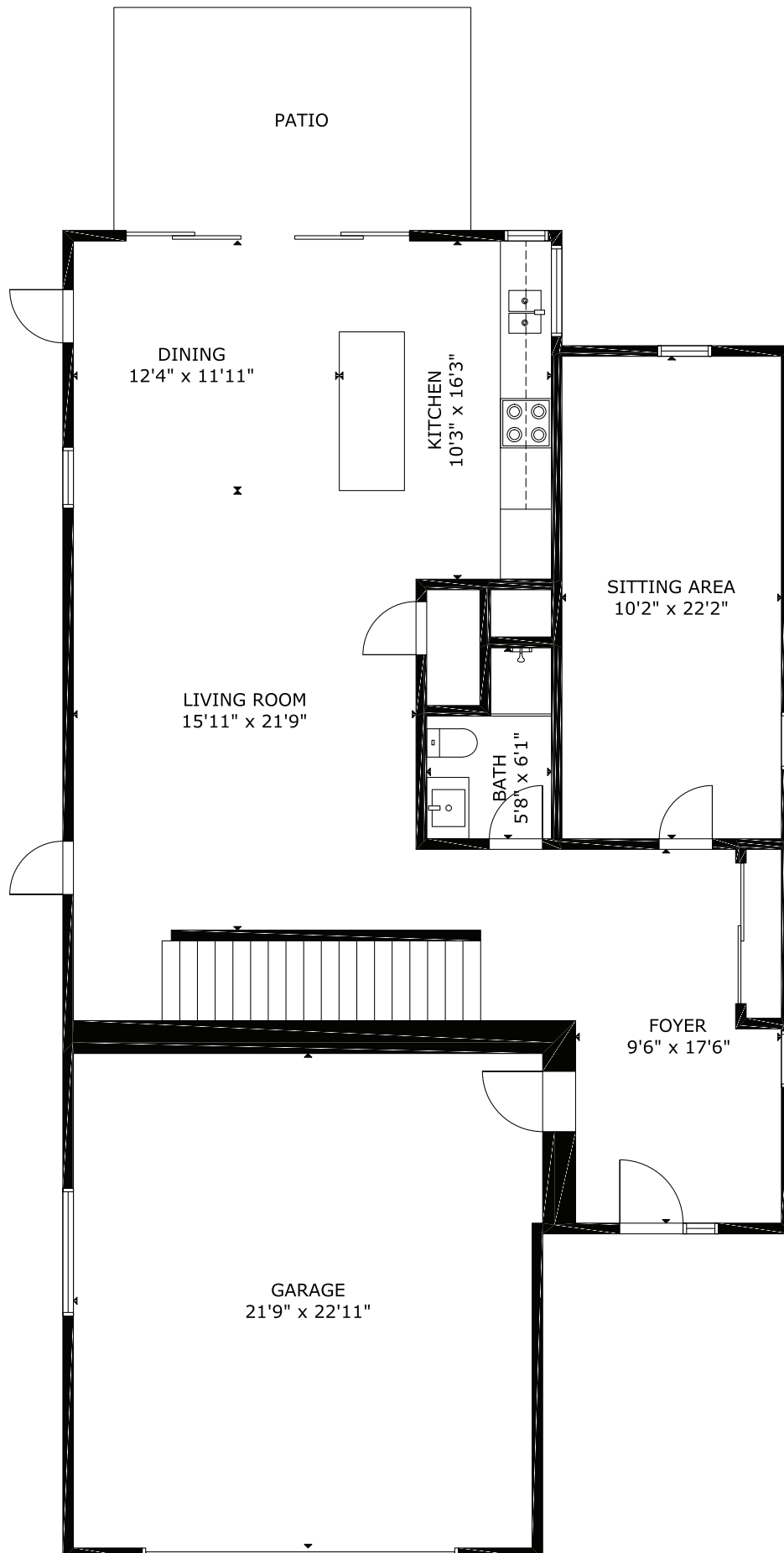


MEASUREMENT ARE APPROXIMATE, ACTUALS MAY VARY. MEASUREMENTS MAY INCLUDE NON-CONFORMING SPACE.



# 6187 EAGLE DRIVE

## MAIN LEVEL



MEASUREMENT ARE APPROXIMATE, ACTUALS MAY VARY. MEASUREMENTS MAY INCLUDE NON-CONFORMING SPACE.

# 6187 EAGLE DRIVE

## UPPER LEVEL

