

# 1600 SOUTHLANDS LANE



**EXCLUSIVE  
SOUTHLANDS  
NEIGHBOURHOOD**

5  
BEDROOMS

4.5  
BATHROOMS

6,364 SQ.FT.  
RESIDENCE

1.937 ACRES  
LOT

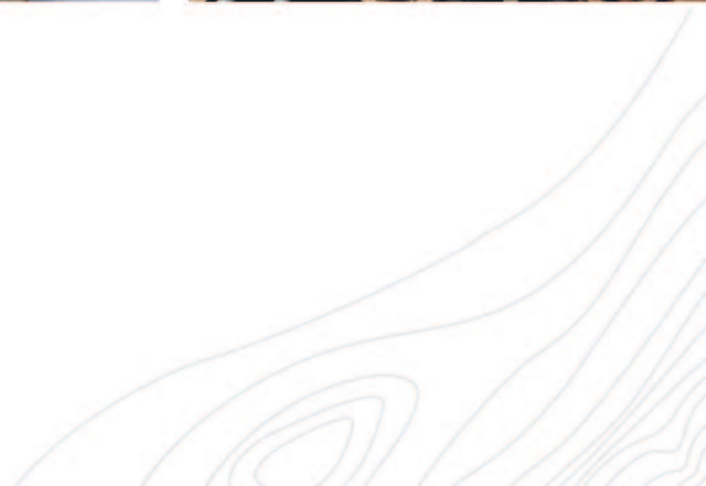


# MODERN MOUNTAIN ESTATE



Enjoy views extending from Mt Currie to Whistler Bowl from this Canadian National Housing and Georgie Award finalist located in the exclusive Southlands neighbourhood within Whistler Valley. The thoughtful design makes optimal use of this private and spacious level lot with attractive landscaping complete with manicured putting hole that is perfectly situated to enjoy full day sun. The generously proportioned residence offers an intelligent and functional layout with 4 bedrooms plus a fully contained guest suite, and the latest in technology for energy efficient homes including triple pane windows, a multi-purpose Creston system, and ultra-high efficiency heating and cooling system while also being pre-wired for installation of solar panels and an EV home charging station if desired. The contemporary interior features a stunning 72" long dual-sided DaVinci fireplace taking center stage in the open plan living area with 25' soaring ceilings. Designed by Brigitte Loranger and built by Vision Pacific, the leader in modern mountain estates.



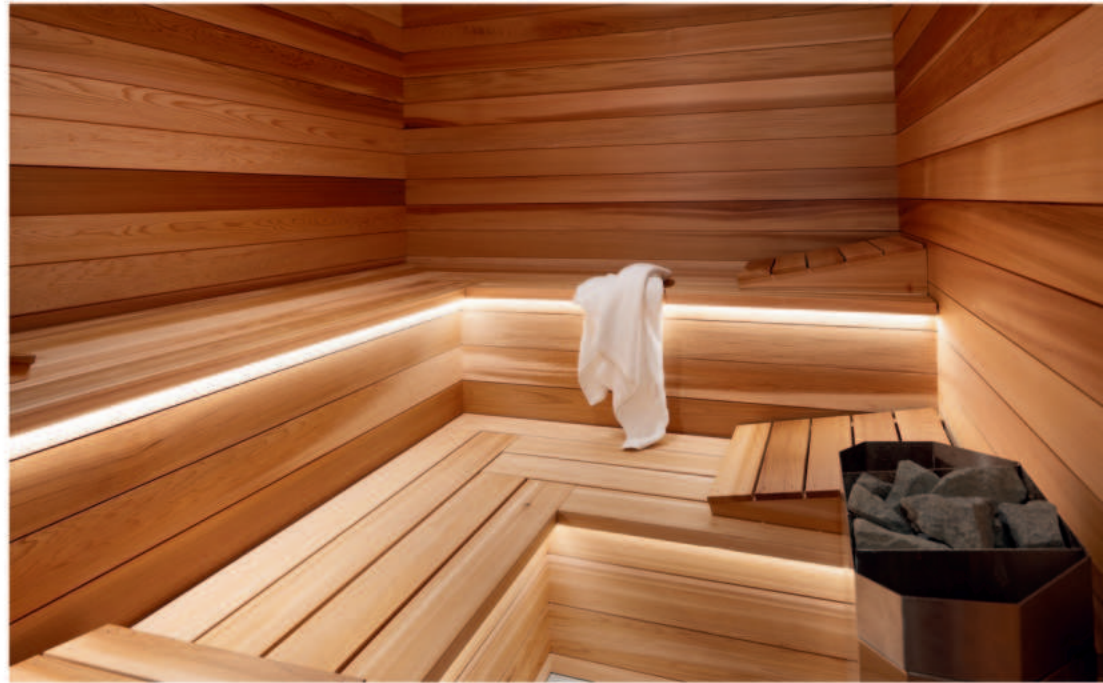






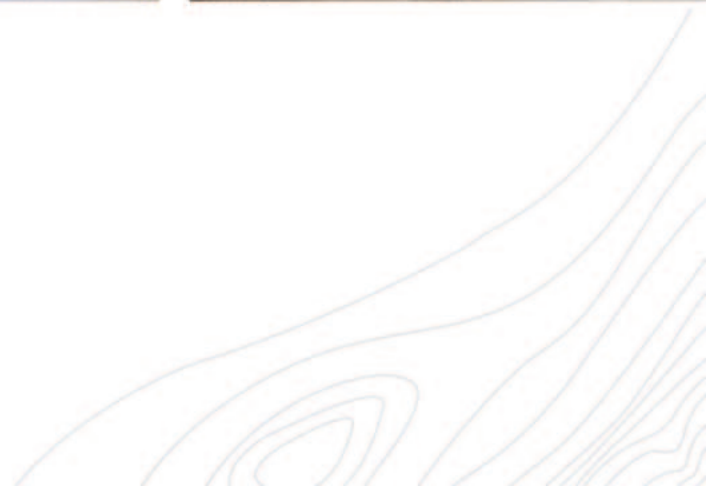
MANICURED PUTTING HOLE

MODERN INDOOR SAUNA



FULLY CONTAINED GUEST SUITE











# ACCESS TO ALL



## EXCLUSIVE NEIGHBOURHOOD

Located in the exclusive Southlands neighbourhood offering ultimate privacy.



## MOUNTAIN VIEWS

Expansive mountain views ranging from Mt Currie to Whistler Bowl.



## CLOSE TO CREEKSIDE'S AMENITIES

Only a 3 minute drive to the base of Creekside for ski access, shops, restaurants and lakes.

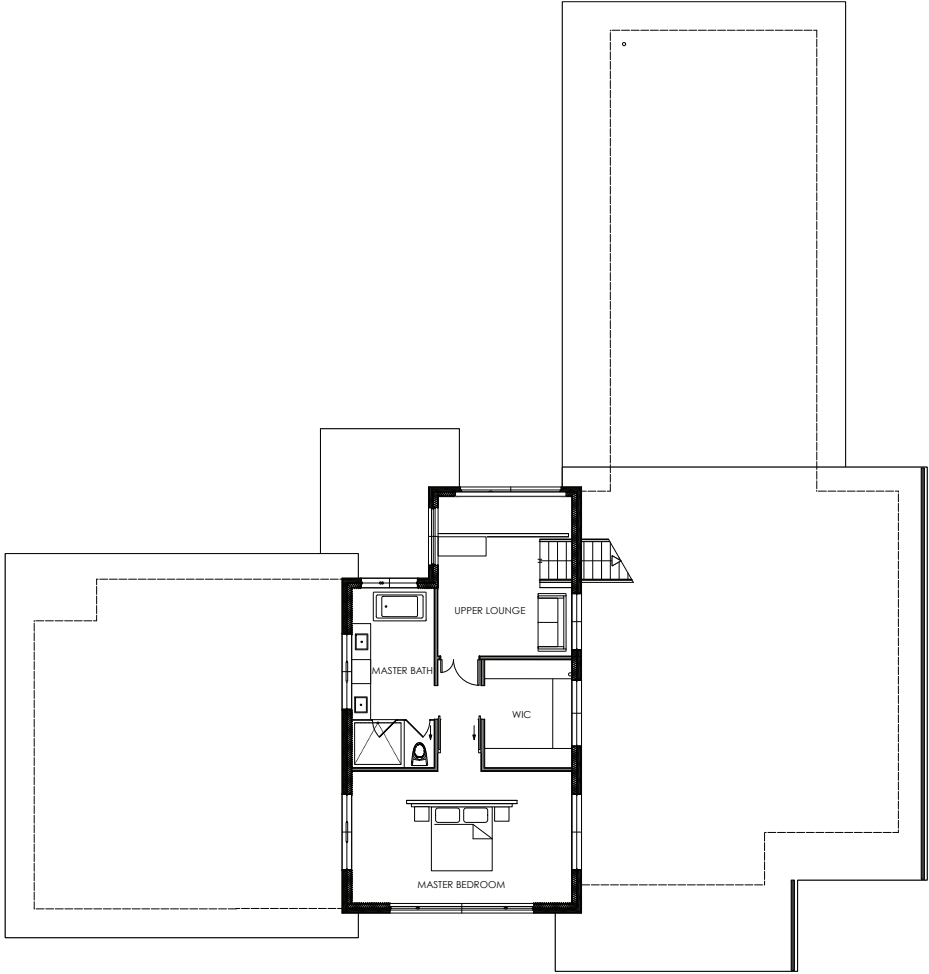


## BIKING & HIKING TRAILS

Quick and convenient access to a multitude of Whistler's best trail networks including Valley Trail.

# 1600 SOUTHLANDS LANE

## UPPER FLOOR

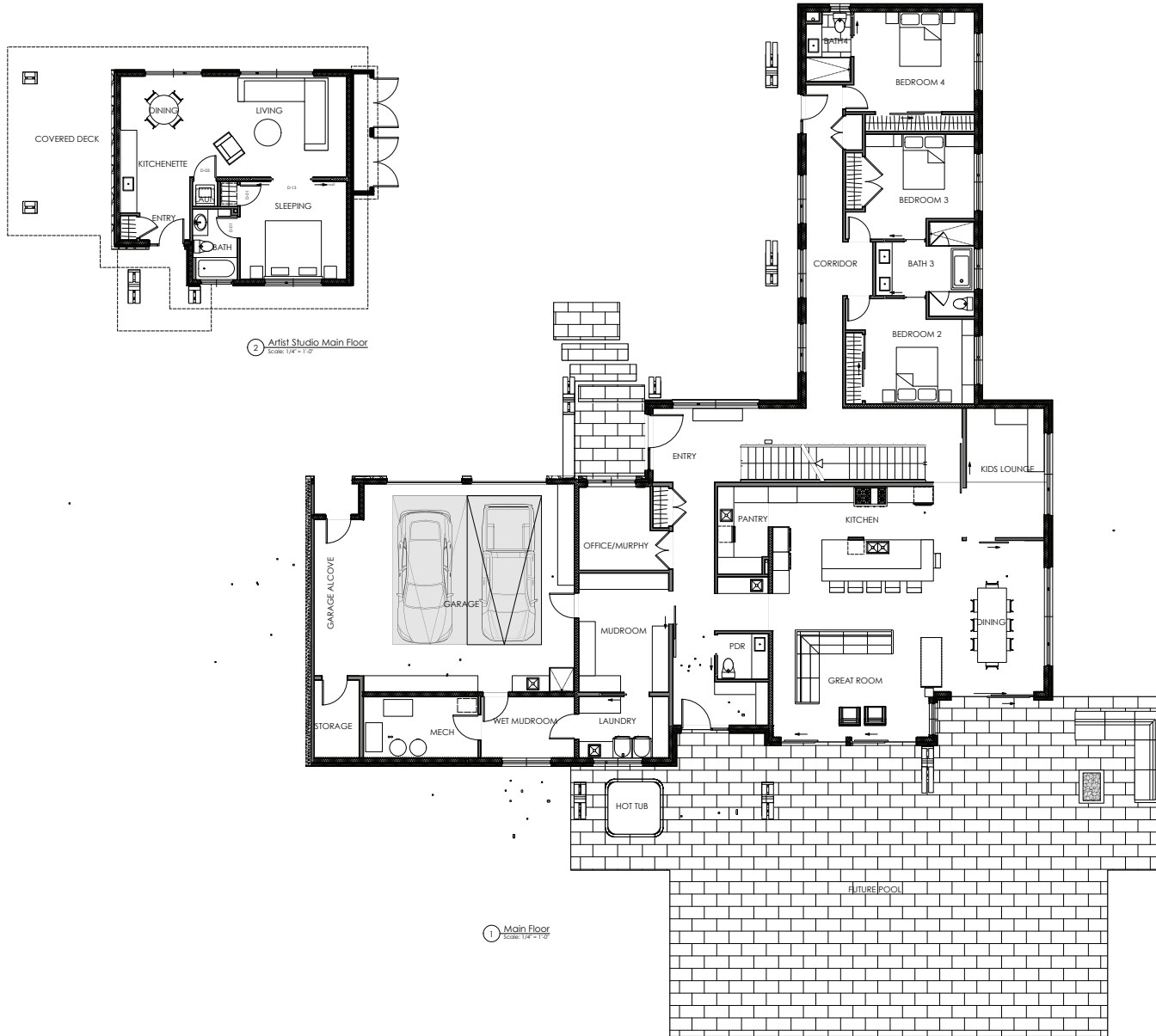


MEASUREMENT ARE APPROXIMATE, ACTUALS MAY VARY. MEASUREMENTS MAY INCLUDE NON-CONFORMING SPACE.



# 1600 SOUTHLANDS LANE

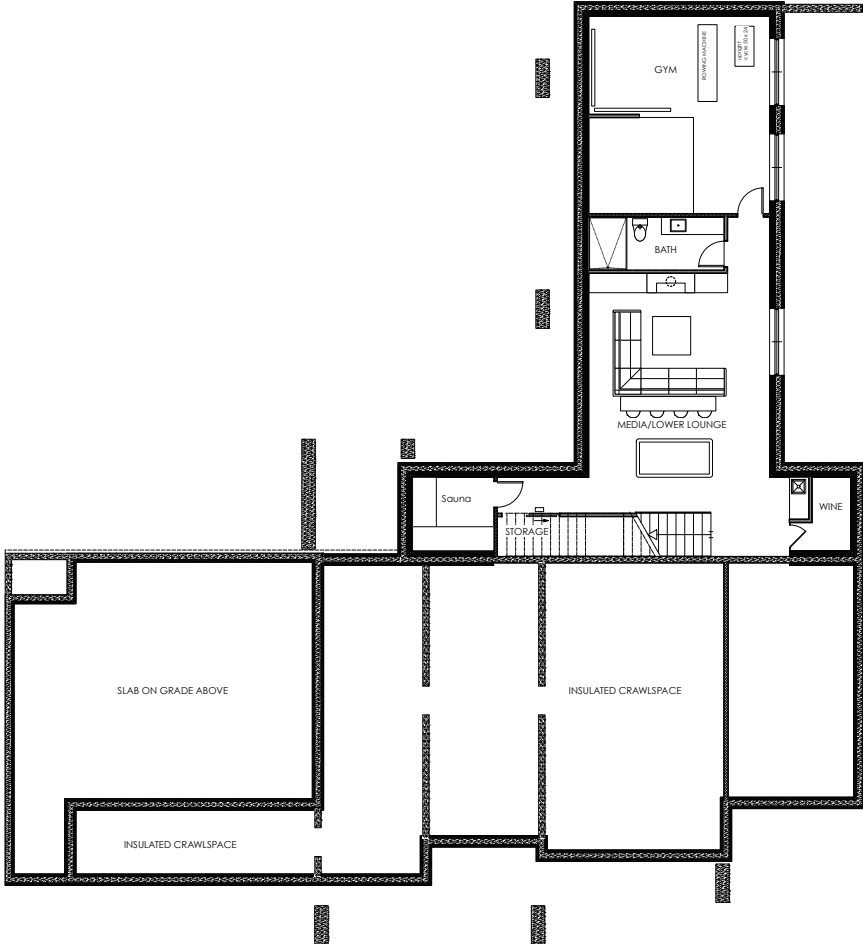
## MAIN FLOOR





# 1600 SOUTHLANDS LANE

## LOWER FLOOR



MEASUREMENT ARE APPROXIMATE, ACTUALS MAY VARY. MEASUREMENTS MAY INCLUDE NON-CONFORMING SPACE.