

3220  
PEAK DRIVE

**MOUNTAIN VIEW  
RESIDENCE**

5  
BEDROOMS  
4,418 SQ.FT.  
RESIDENCE

5.5  
BATHROOMS  
11,410 SQ.FT.  
LOT

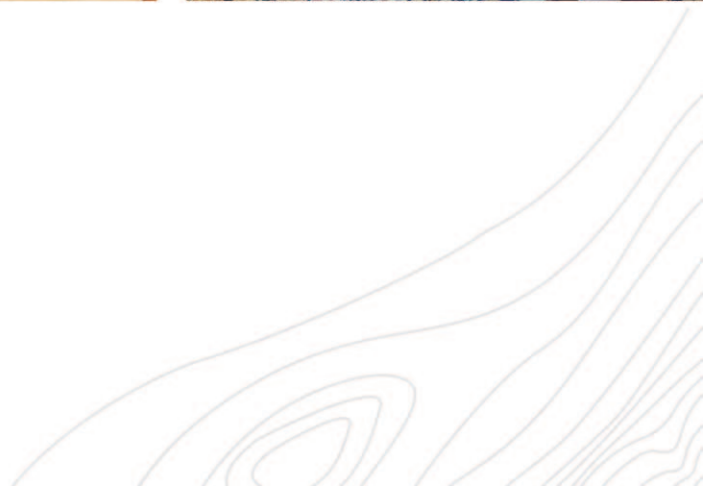


# PANORAMIC MOUNTAIN VIEWS



Panoramic mountain views encircle this elevated residence perched on the desirable Blueberry Hill, within walking distance to Whistler Village. Superior workmanship compliments its chiselled natural surroundings, with custom masonry, exclusive millwork features and exquisite architecture delivering a sense of mountain luxury.

Sweeping views from Whistler Mountain in the south to Armchair and Wedge Mountains to the north equally dominate indoor and outdoor living spaces. A large kitchen and dining area, grand living room, break-away areas and massive, sun-drenched roof top patio provide ample space for large groups or families while each large bedroom provides a place for visitors to retreat. Nightly rentals permitted.



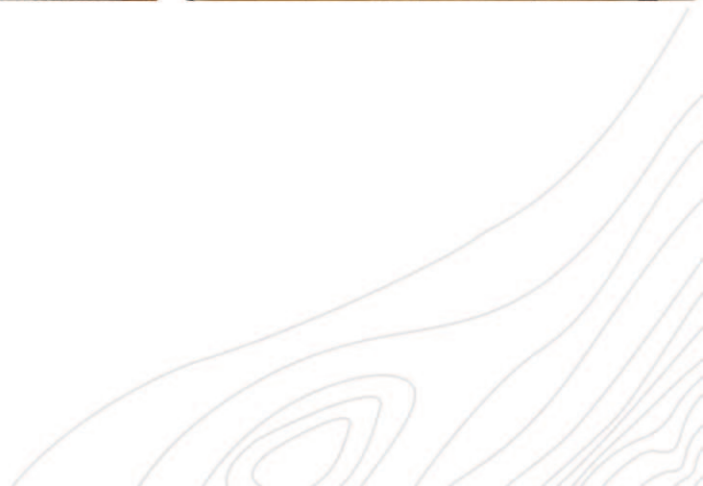


SUN DRENCHED ROOF TOP PATIO

INCREDIBLE VIEWS  
SPANNING FROM WHISTLER  
TO WEDGE MOUNTAINS

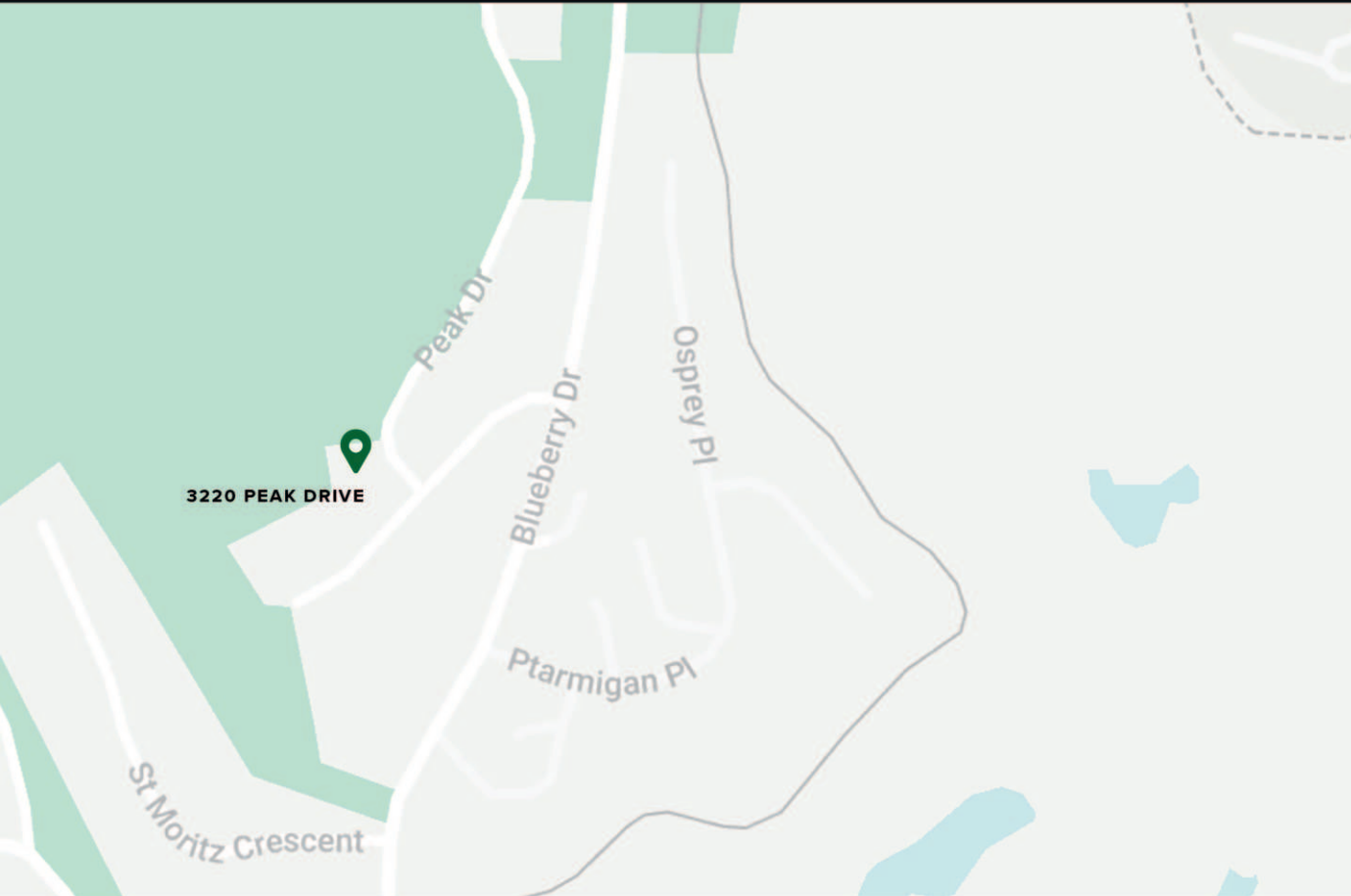


LARGE MASTER ENSUITE WITH  
LUXURIOUS SPA BATH & FOREST  
VIEWS





# ACCESS TO ALL



## WALKING DISTANCE

25 minute stroll or 10 minute bike ride to Whistler Village.



## NIGHTLY RENTALS

Flexible zoning allows for unlimited owner usage and nightly rentals.



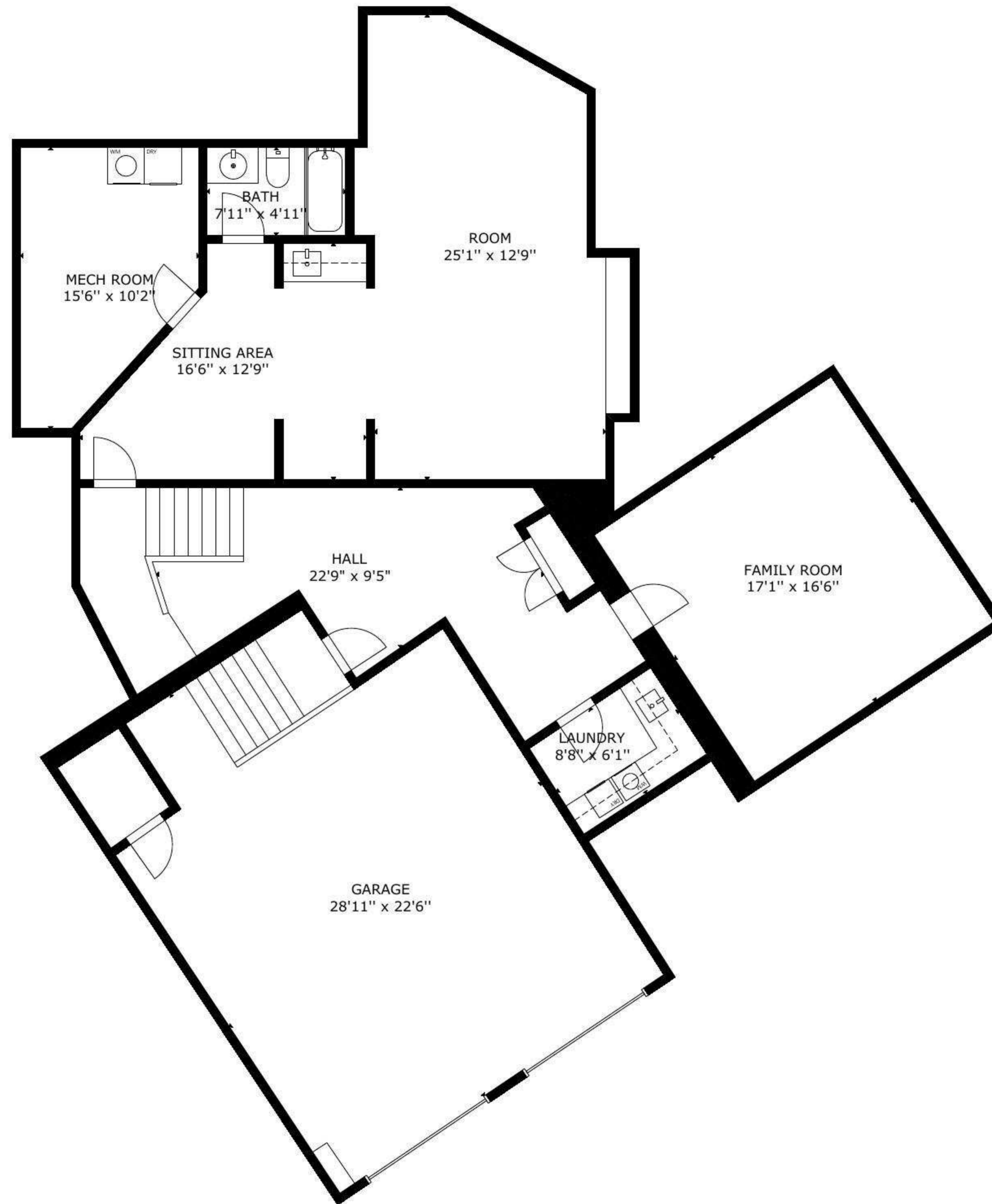
## BIKING TRAILS

Quick and convenient access to a multitude of Whistler's best trail networks including Valley Trail.



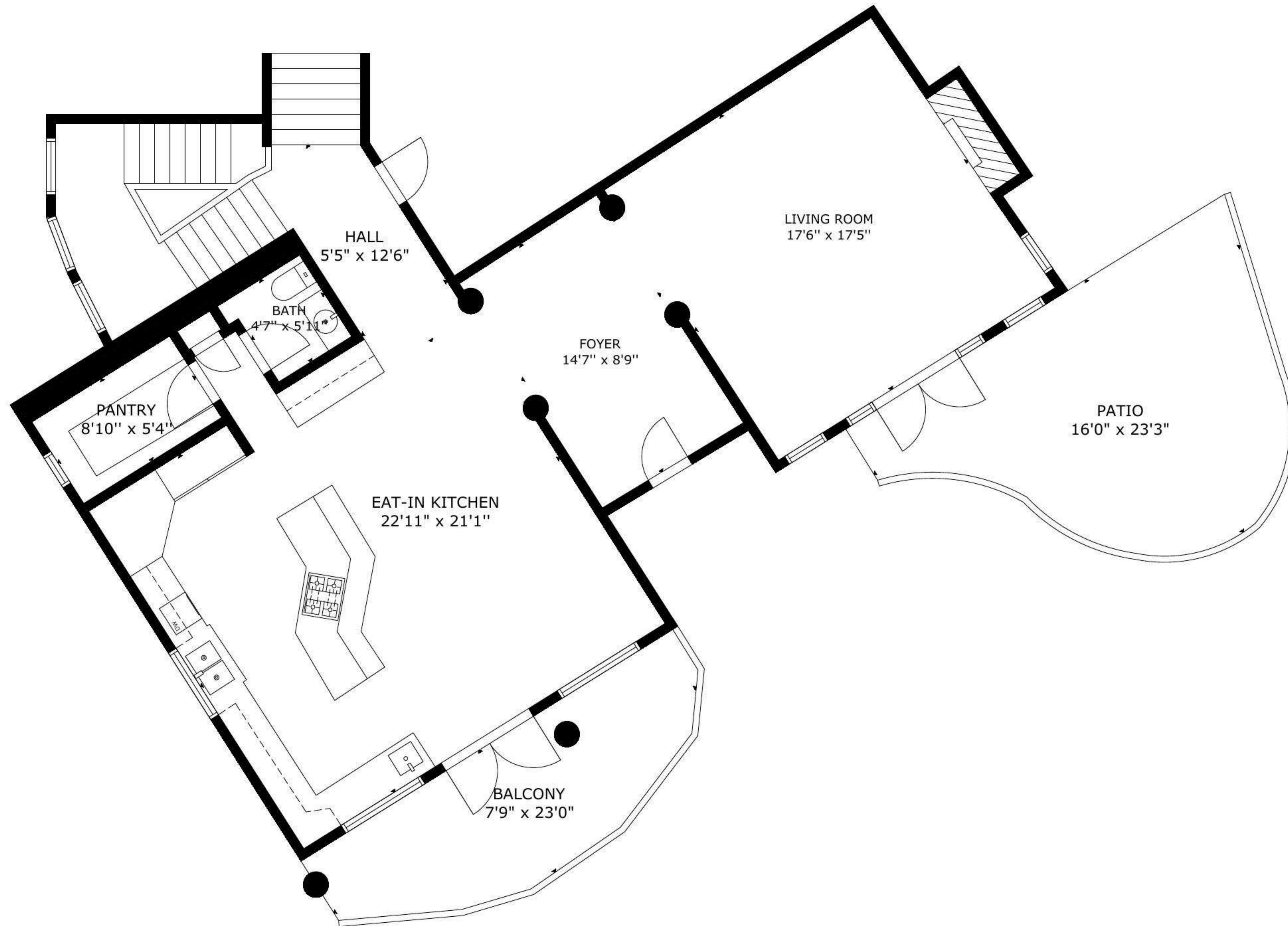
## GOLF COURSE NEARBY

Easy access to golf course and Alta Lake.

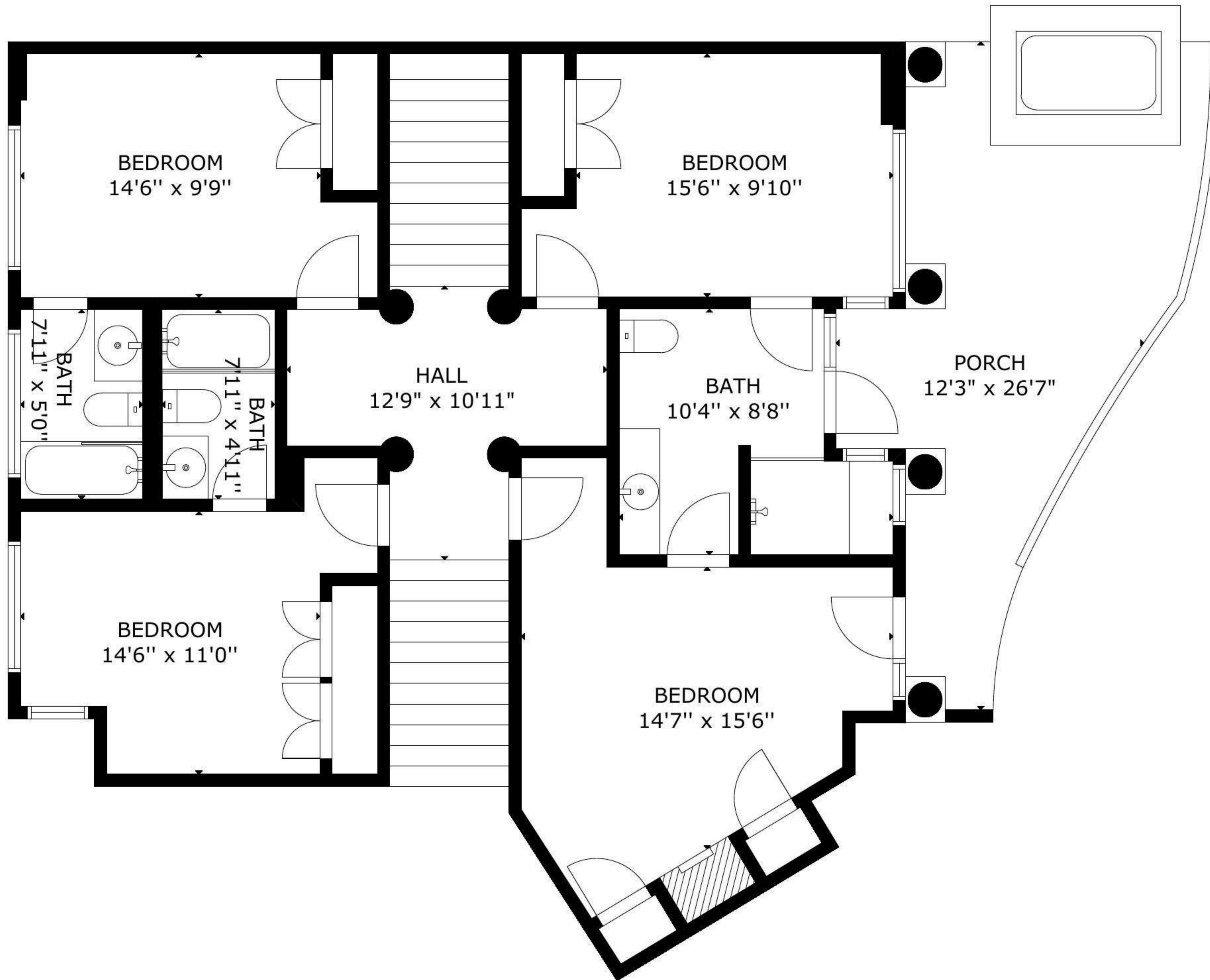


GROSS INTERNAL AREA  
 TOTAL: 4,418 sq ft  
 FLOOR 1: 1,444 sq ft, FLOOR 2: 1,246 sq ft  
 FLOOR 3: 1,023 sq ft, FLOOR 4: 705 sq ft  
 EXCLUDED AREA: GARAGE: 657 sq ft, BALCONY: 150 sq ft  
 DECK: 925 sq ft, PORCH: 247 sq ft, PATIO: 257 sq ft  
 SIZE AND DIMENSIONS ARE APPROXIMATE, ACTUAL MAY VARY.

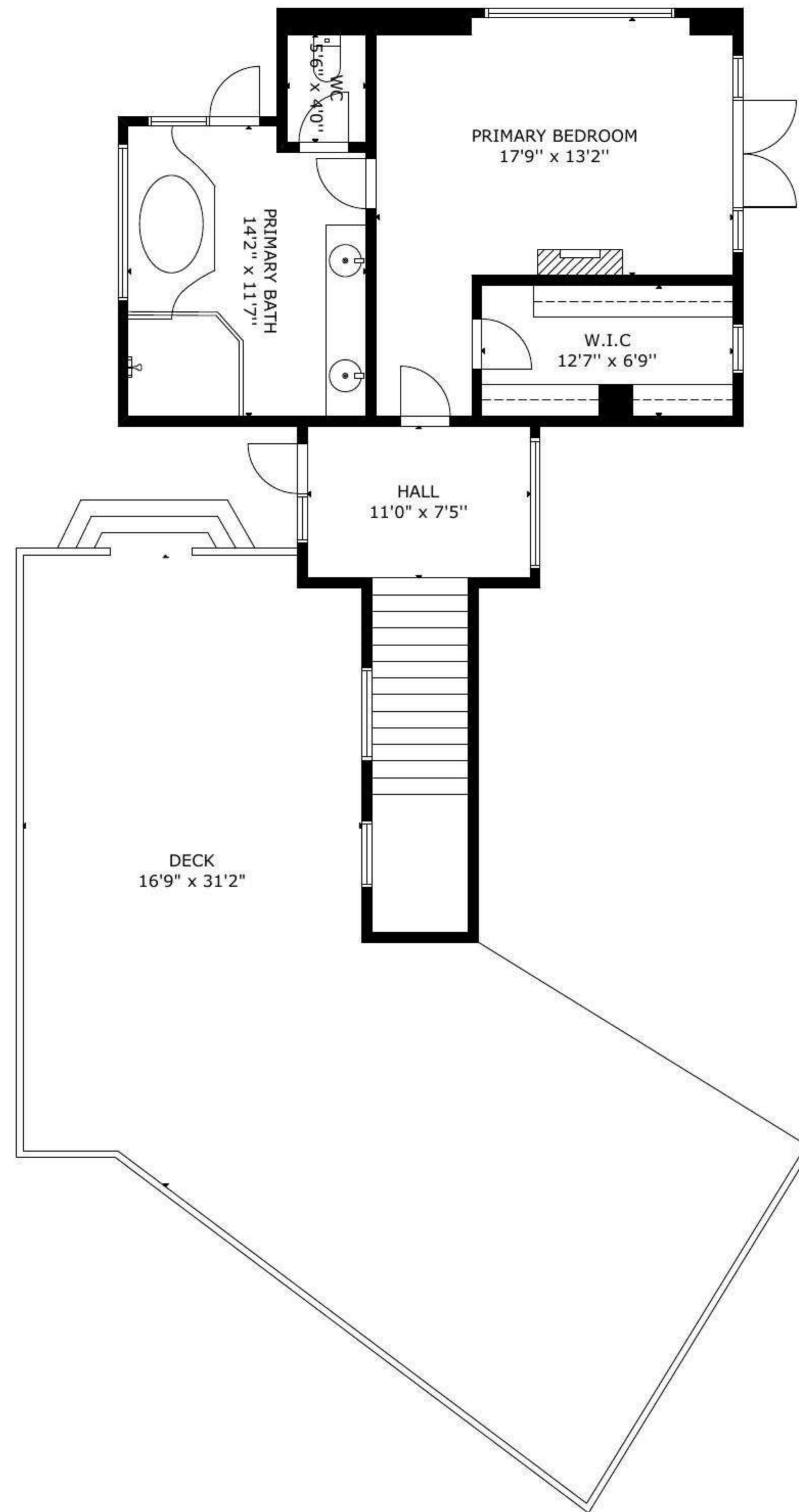




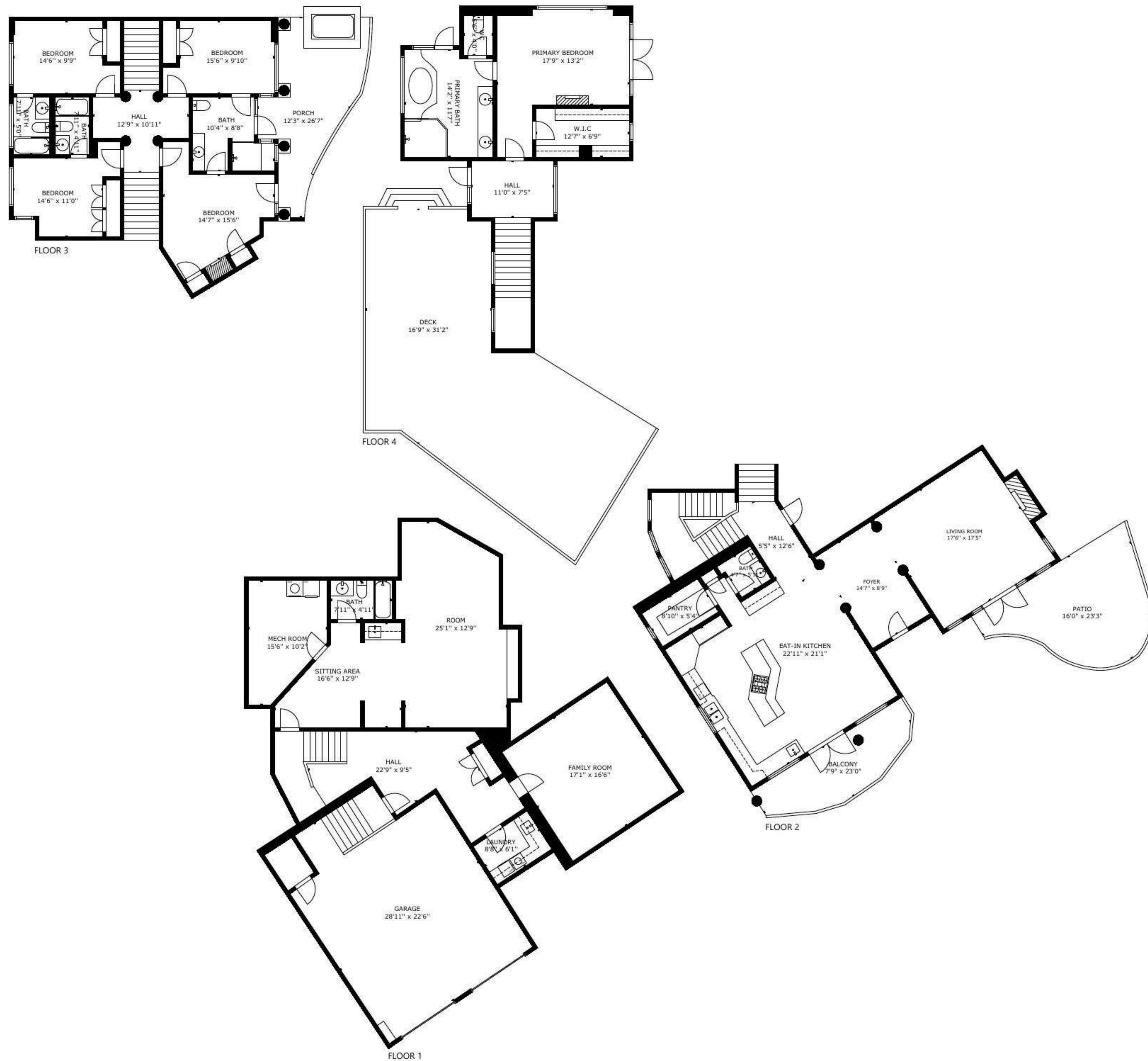
GROSS INTERNAL AREA  
 TOTAL: 4,418 sq ft  
 FLOOR 1: 1,444 sq ft, FLOOR 2: 1,246 sq ft  
 FLOOR 3: 1,023 sq ft, FLOOR 4: 705 sq ft  
 EXCLUDED AREA: GARAGE: 657 sq ft, BALCONY: 150 sq ft  
 DECK: 925 sq ft, PORCH: 247 sq ft, PATIO: 257 sq ft  
 SIZE AND DIMENSIONS ARE APPROXIMATE, ACTUAL MAY VARY.



GROSS INTERNAL AREA  
 TOTAL: 4,418 sq ft  
 FLOOR 1: 1,444 sq ft, FLOOR 2: 1,246 sq ft  
 FLOOR 3: 1,023 sq ft, FLOOR 4: 705 sq ft  
 EXCLUDED AREA: GARAGE: 657 sq ft, BALCONY: 150 sq ft  
 DECK: 925 sq ft, PORCH: 247 sq ft, PATIO: 257 sq ft  
 SIZE AND DIMENSIONS ARE APPROXIMATE, ACTUAL MAY VARY.



GROSS INTERNAL AREA  
 TOTAL: 4,418 sq ft  
 FLOOR 1: 1,444 sq ft, FLOOR 2: 1,246 sq ft  
 FLOOR 3: 1,023 sq ft, FLOOR 4: 705 sq ft  
 EXCLUDED AREA: GARAGE: 657 sq ft, BALCONY: 150 sq ft  
 DECK: 925 sq ft, PORCH: 247 sq ft, PATIO: 257 sq ft  
 SIZE AND DIMENSIONS ARE APPROXIMATE, ACTUAL MAY VARY.



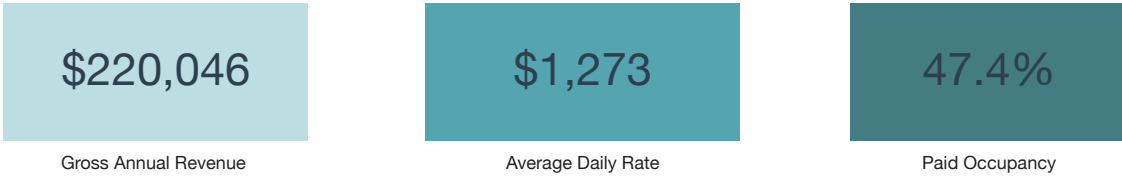
GROSS INTERNAL AREA  
 TOTAL: 4,418 sq ft  
 FLOOR 1: 1,444 sq ft, FLOOR 2: 1,246 sq ft  
 FLOOR 3: 1,023 sq ft, FLOOR 4: 705 sq ft  
 EXCLUDED AREA: GARAGE: 657 sq ft, BALCONY: 150 sq ft  
 DECK: 925 sq ft, PORCH: 247 sq ft, PATIO: 257 sq ft  
 SIZE AND DIMENSIONS ARE APPROXIMATE, ACTUAL MAY VARY.

# 3220 PEAK DRIVE

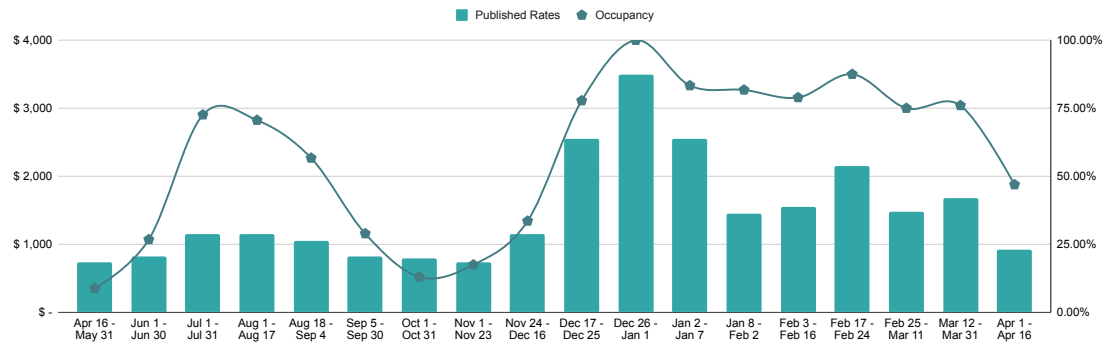
5 Bedrooms, 5.5 Bathrooms

WHISTLER  
PLATINUM

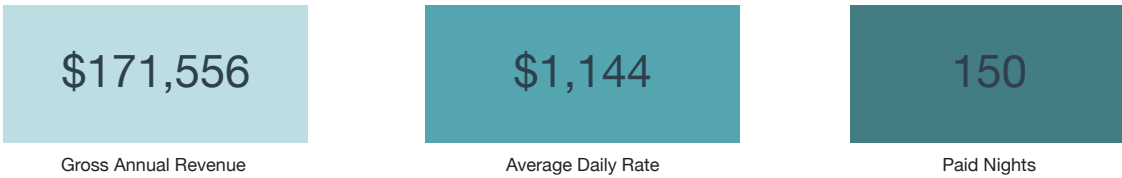
## REVENUE ESTIMATE



### Forecast Rates vs Occupancy



## ACTUAL 12-MONTH REVENUE



### 12-Month Actual Revenue and Average Daily Rate by Bookings

